



WINNIPEG SCHOOL DIVISION  
INVESTING IN THE FUTURE

# **Your Guide to WSD 2009-10**

1577 Wall Street East  
Winnipeg, Manitoba R3E 2S5  
Phone: (204) 775-0231 Fax: (204) 772-6464  
[www.wsd1.org](http://www.wsd1.org)

# 2009-10 School Calendar

September 2009	Sunday	Monday	Tuesday	Wednesday	Thursday	Friday	Saturday
			1	2	3	4	5
	6	7 Labour Day	8 Day 1 Schools open	9 Day 2	10 Day 3	11 Day 4	12
	13	14 Day 5	15 Day 6	16 Day 1	17 Day 2	18 Day 3	19
	20	21 Day 4	22 Day 5	23 Day 6	24 Day 1	25 Day 2	26
	27	28 Day 3	29 Day 4	30 Day 5			

October 2009	Sunday	Monday	Tuesday	Wednesday	Thursday	Friday	Saturday
					1 Day 6	2 Day 1	3
	4	5 Day 2	6 Day 3	7 Day 4	8 Day 5	9 Day 6	10
	11	12 Thanksgiving Day	13 Day 1	14 Day 2	15 Day 3	16 Day 4	17
	18	19 Day 5	20 Day 6	21 Day 1	22 Day 2	23 Day 3	24
	25	26 Day 4	27 Day 5	28 Day 6	29 Day 1	30 Day 2	31

November 2009	Sunday	Monday	Tuesday	Wednesday	Thursday	Friday	Saturday
	1	2 Day 3	3 Day 4	4 Day 5	5 Day 6	6 Day 1	7
	8	9 Day 2	10 Day 3	11 Remembrance Day	12 Day 4	13 Day 5	14
	15	16 Day 6	17 Day 1	18 Day 2	19 Day 3	20 Day 4	21
	22	23 Day 5	24 Day 6	25 Day 1	26 Day 2	27 Day 3	28
	29	30 Day 4					

December 2009	Sunday	Monday	Tuesday	Wednesday	Thursday	Friday	Saturday
			1 Day 5	2 Day 6	3 Day 1	4 Day 2	5
	6	7 Day 3	8 Day 4	9 Day 5	10 Day 6	11 Day 1	12
	13	14 Day 2	15 Day 3	16 Day 4	17 Day 5	18 Day 6 Last day of school	19
	20	21 Winter break starts	22	23	24	25	26
	27	28	29	30	31		

January 2010	Sunday	Monday	Tuesday	Wednesday	Thursday	Friday	Saturday
						1 Last day of winter break	2
	3	4 Day 1 Schools reopen	5 Day 2	6 Day 3	7 Day 4	8 Day 5	9
	10	11 Day 6	12 Day 1	13 Day 2	14 Day 3	15 Day 4	16
	17	18 Day 5	19 Day 6	20 Day 1	21 Day 2	22 Day 3	23
	24/31	25 Day 4	26 Day 5	27 Day 6	28 Day 1	29 Day 2	30

Continued on back inside cover

# Table of Contents

---

Mission Statement, Guiding Principles .....	i
General Information.....	1
Board of Trustees.....	5
Senior Administration.....	6
Organizational Chart.....	7
Division Schools.....	8-46
Departments	
Building Department .....	47
Human Resources.....	47-48
Research, Planning and Systems Management.....	48-49
Secretary-Treasurer's.....	49
Superintendent's .....	50
Support Services	
Aboriginal Education.....	51
Assessment and Instructional Support Services.....	51
Child Guidance Clinic.....	51-52
Community Liaison Officers.....	52
Educational Technology Support Services.....	53
Prince Charles ERC.....	53
Professional Support Services Staff.....	54-55
Student Support Services.....	55
Day Care Centres.....	56
Volunteers .....	57
Programs.....	58-69
Board Committees .....	70
Budget.....	71
Statistics .....	72
School Index.....	73-74
Quick Reference.....	75-76

# MISSION STATEMENT

---

## The Mission of The Winnipeg School Division

is to provide a learning environment that promotes and fosters the growth of each student's potential and provides an opportunity for the individual student to develop the knowledge, skills, and values necessary for meaningful participation in a global and pluralistic society.



## **GUIDING PRINCIPLES OF THE DIVISION:**

- Believes in the equality, worth, potential and dignity of all individuals.
- Believes that the public school is an essential component of society and culture. By working cooperatively with the home and the community the Division can ensure that its programs reflect the changing needs of society and the values, beliefs, and traditions of the local school community.
- Believes that in addition to basic literacy and communication skills all students must be challenged to develop the ability to interpret and evaluate information.
- Believes each student must be given the opportunity to develop the values, attitudes, and moral principles that enable them to become responsible citizens who relate to others in an empathetic and moral manner.
- Believes its greatest resource is the staff. The Division is committed to providing professional development for all employees and an opportunity to participate in the decision-making process of the Division.
- Will advocate on behalf of students to ensure appropriate care and support services are provided for all children.
- Believes in the dignity of the individual and supports the staff in the maintenance of proper student conduct to ensure a safe, nurturing learning environment within the schools.

# General information

---

The goal of the Winnipeg School Division is to optimize educational growth opportunities for all students.

The Division provides educational programs and related services to approximately 33,400 students from Nursery to Grade 12, in regular elementary and secondary classes, special education classes, or adult day schools. In addition, the Division provides summer programs and English as an Additional Language classes.

The Winnipeg School Division has 77 schools: Elementary (N-6) = 45, Elementary and Junior High (N-8) = 10, Elementary and Junior High (N-9) = 3, Junior High (7-8) = 1, Junior High (7-9) = 4, Junior-Senior High (7-12) = 6, Senior High (9-12) = 6, Senior High (10-12) = 1 and Winnipeg Adult Education Centre = 1. Nursery classes are offered in all Winnipeg School Division elementary schools.

Community involvement in schools is encouraged through school-based decision making and Parent Advisory Councils. Membership in the local school organization is encouraged to allow greater involvement of parents in the education of their children.

Parents are encouraged to communicate with the school in regard to the academic and social progress of their children and any concerns that may arise. If the classroom teacher is unable to address any concerns raised, the parent should discuss the matter with the school administrator (principal or vice-principal). District superintendents are available to discuss concerns with regard to individual schools if the problem cannot be resolved at the school level.

## WINNIPEG SCHOOL DIVISION BOUNDARIES

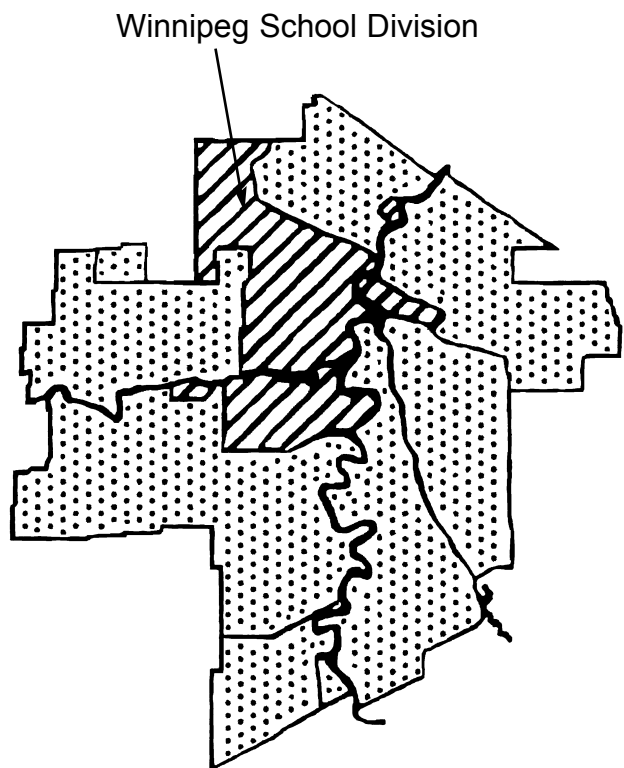
**South**—Red River, Parker Avenue, Wilkes Avenue

**West**—Morpeth Boulevard, Edgeland Boulevard, Assiniboine River, St. James Street, Keewatin Boulevard to Selkirk Avenue and just west of Brookside Boulevard from Notre Dame Avenue.

**North**—Mollard Road to Ritchie Street and Rozmus Road, Carruthers Avenue to McGregor Street and just north of McAdam Avenue.

**East**—Red River.

**Elmwood area**—from just north of Harbison Avenue on the north, to Panet Road on the east, to Elmwood Road on the south.



## General information

---

### ENTRANCE AGE

Any child whose fourth birthday falls on or before December 31 may enter nursery at the opening of school in the fall of the same year. Any child whose fifth birthday falls on or before December 31 may enter kindergarten in the fall of that year, and any child whose sixth birthday falls on or before December 31 may enter Grade 1.

Where space is not available, the Superintendent may refuse admission of a child to kindergarten and nursery until such time as room is available.

The presentation of a birth certificate or other satisfactory proof of age is required of each child upon admission to school.

Applicants for first admission to nursery, kindergarten and Grade 1 should have a medical examination.

### NURSERY

Winnipeg School Division offers a free nursery program for children who live within the Division's catchment area. Nursery programs have been offered in the Division since 1965. Today all Winnipeg School Division schools have nursery classes which operate on a ten month basis. In addition, the Division supports a nursery program at Mount Carmel Clinic.

The Division funds the nursery program with no financial support from the Province.

### ELEMENTARY SCHOOL PROGRAM

In the Winnipeg School Division, elementary programs are defined as those programs designed for students aged five to 11. The elementary school program includes kindergarten to Grade 6.

The K-6 program includes the following areas of study: language arts (listening, reading, writing, speaking, viewing and representing), mathematics, science, social studies, physical education, health, music and art. A second language may be offered according to Division policy.

Instruction in basic French is offered in Grades 4, 5, and 6 in most schools in the Division.

### SECONDARY SCHOOL PROGRAM

The Winnipeg School Division's secondary programs are offered to students in Grades 7-12.

Effective September, 2008, the high school program requires 29 credits for graduation: four credits are required for language arts; mathematics is compulsory in Grades 9 to 12; social studies is compulsory in Grades 9 to 11; science is compulsory in Grades 9 and 10; physical education is compulsory in Grades 9 to 12 (previously not compulsory in Grade 11 and 12); art and music are optional; basic French is optional and other languages can be used for one credit per grade.

(Please note that effective September, 2009, the high school program will move from 29 credits to 30 credits to reflect the two-year phase-in of the compulsory Grade 11 and 12 physical education program.)

Many of the secondary schools have developed other courses to meet the needs of students.

# General information

---

## VOCATIONAL PROGRAM

The students in the vocational programs at R.B. Russell Vocational High School and Technical-Vocational High School spend 50 per cent of their time in vocational courses and 50 per cent in an academic program.

A wide variety of technical and vocational courses are offered at each school.

## INSERVICE DAYS

Manitoba Education provides, in each calendar year, the opportunity for teacher inservices, parent-teacher conferences, administration and student evaluation to a maximum of 10 days for all teachers, at least five of which must be used for inservices.

Schools are expected to inform parents of any such inservices well in advance of the proposed dates.

## SCHOOL CATCHMENT AREAS

Catchment areas for each school within the Division are established under the direction of the Chief Superintendent and students normally attend the school within the catchment area in which they reside. Resident students may be permitted to attend any school of choice in the Division provided space is available and transportation costs are not borne by the Division.

Catchment areas have also been established for specific language and alternative programs.

## NON-RESIDENTS

In accordance with provincial policy, students living outside the boundaries of the Division may apply to enrol in regular Division programs, without payment of non-resident fees provided:

- space is available in the school of choice
- there is no additional cost to the Division
- application is made by the deadline  
(Metro - September 30) (Other - May 15)

Tuition fees are charged to non-resident students who are not eligible to be funded by Manitoba Education, Citizenship and Youth i.e. nursery students, foreign students, foreign exchange students, band sponsored treaty students and students from other provinces.

Application for enrolment may be made directly at the school of choice. For more information please contact the non-resident clerk at 789-0489.



## General information

---



**Special Situations:** There are some special situations where transportation is provided to accommodate safety considerations or geographic locations.

Parents are to contact their home school for ALL transportation requests, changes, etc. The school will then update Mayet and forward the information to Transportation or the Special Education Department for follow-up.

## TRANSPORTATION

The transportation of students within the Division is governed by the Public Schools Act, (Sections 43-47), Manitoba Regulation No. 465/88R and 139/95 under the Public Schools Act, and Division Policy EEA.

### **Transportation is provided as follows:**

**Special Education:** Students who have physical, mental, and/or emotional disabilities are provided with school bus transportation on a door-to-door basis.

**Language and Alternative Programs:** Students enrolled in language and alternative programs in Grades K-6 whose residence is more than 1.6 kilometers (1 mile) from the school they are required to attend, are transported to and from school from designated pick-up points.

Transportation is provided for N-6 French milieu students (attending French milieu schools who live over 1.6 kilometers from their catchment-area milieu school).

# Board of Trustees

The Board of Trustees of The Winnipeg School Division consists of nine trustees who are elected by the local community, with three trustees representing each electoral ward.

Elections for school division trustees are held every four years in conjunction with the City of Winnipeg municipal elections.

The Board of Trustees, under the terms of The Public Schools Act, is responsible for setting the policies under which the Division and its schools will operate in providing education for students. Well defined policies set the goals and objectives for the system. In addition, the Board is responsible for ensuring that sufficient staff and facilities are in place to operate the school system in accordance with established policies.

Regular meetings of the school board to deal with the general business of the Board are usually held on the first and third Monday of each month during the school year.

Special meetings are usually held once a month during the school year. Delegations of residents, parents of Division students, and Division students who have registered in advance may make a brief presentation to the Board at these special meetings.

Board meetings are held at the school division office, 1577 Wall Street East, commencing at 7:00 p.m. The public is welcome to attend Board meetings to observe the proceedings.

For further information, contact the Board office at 789-0469.



## BOARD OF TRUSTEES

### Ward 1

Joyce Bateman .....799-8855  
Rita Hildahl .....414-7706  
Jackie Sneesby .....489-3277

### Ward 2

Kristine Barr .....775-0990  
Cindy Gilroy-Price .....781-6230  
Anthony Ramos .....293-8040

### Ward 3

Mike Babinsky .....582-9296  
Suzanne Hrynyk .....452-3847  
Sonia Prevost-Derbecker .....781-8658

# Senior Administration

---

The Chief Superintendent of Schools is the Chief Executive and Education Officer of the Board and is hired by the Board of Trustees to manage the affairs of the school division in accordance with the policies established by the Board.

The academic organization of the Division is based on four groups of schools – Inner City, Central, North and South. Each group has a superintendent who is accountable to the chief superintendent for the efficient and effective operation of their respective jurisdictions.

The members of the Division’s administrative team include:

**Pauline Clarke**

Chief Superintendent

**René Appelmans**

Secretary-Treasurer

**Karin Seiler**

Superintendent of Schools - Inner City

**Celia Caetano-Gomes**

Superintendent of Schools - Central

**Robert Chartrand**

Superintendent of Schools - South

**Dushant Persaud**

Superintendent of Schools - North

**Jan Zamparutti**

Director of Educational Technology  
Support Services

**George Heath**

Director, Building Department

**Doug Edmond**

Director, Research, Planning  
& Systems Management

**Val Georges**

Director of Aboriginal Education

**Eugene Gerbasi**

Director of Human Resources

**Julie Millar**

Director, Student Support Services

**Julie Smerchanski**

Director of Assessment and Instructional  
Support Services

**Tom Bobby**

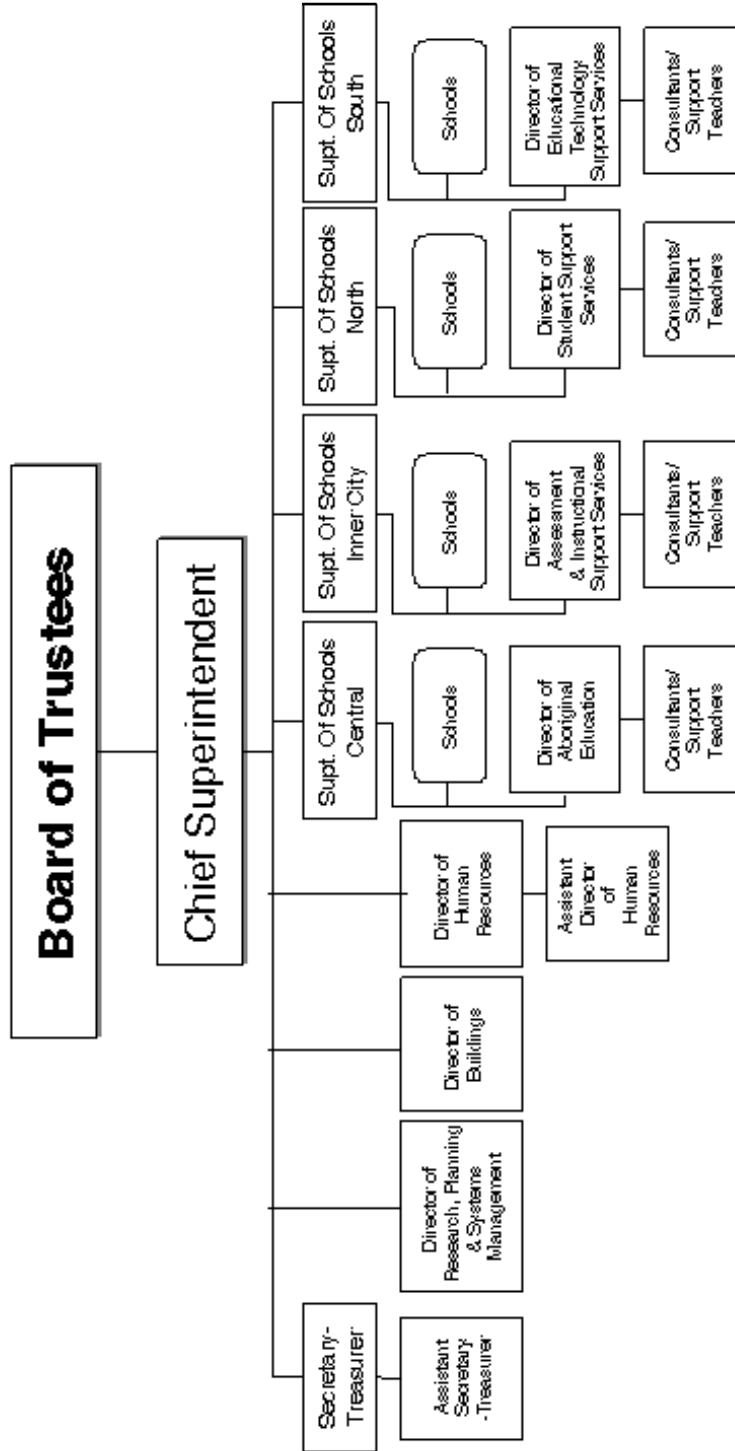
Assistant Secretary-Treasurer

**Christine Rhodes**

Assistant Director of Human Resources

# Organizational chart

## The Winnipeg School Division



August 2005

# Division Schools

---

## **ANDREW MYNARSKI V.C.**

**586-8497**

Ward Three



Fax: 582-2702

1111 Machray Avenue

Winnipeg, Manitoba R2X 1H6

e-mail: andrewmynarski@wsd1.org

**Principal** Douglas Taylor  
**Vice-Principal** Jeannette Tourangeau  
**Superintendent** Dushant Persaud

Parent Council

### **Grades 7-9**

- English Program
- Later Literacy
- Integrated Special Education Services
- Learning Assistance Centre
- Lifeskills Program
- Enrichment Program
- Adaptive Skills Program
- Reading Recovery
- Band
- Drama
- Dance

## **ARGYLE ALTERNATIVE**

**942-4326**

Ward Two



Fax: 943-1759

30 Argyle Street

Winnipeg, Manitoba R3B 0H4

e-mail: argyle@wsd1.org

**Principal** Patricia Graham  
**Superintendent** Karin Seiler

### **Grades 10-12**

- English Program
- Community Support Worker
- Infant Development Lab
- Mentorship Program
- Outdoor Classroom
- Performing and Visual Arts
- School Support Worker
- School to Work Transition
- Drama
- Youth in Philanthropy

# Schools Schools Schools Schools Schools

---

## **BROCK CORYDON**

**488-4422**

Ward One



Fax: 489-8764

1510 Corydon Avenue

Winnipeg, Manitoba R3N 0J6

e-mail: brockcorydon@wsd1.org

website: www.wsd1.org/brockcorydon

**Principal**

Ira Udow

**Superintendent**

Robert Chartrand

Parent Advisory Council

National UNESCO Associated School

### **Grades N-6**

- Hebrew/English Bilingual
- English Program
- Basic French Language
- English-as-an-Additional Language Program
- Enrichment Program
- Home Reading Program
- Integrated Special Education Services
- Literacy Through the Arts Program (Integrated)
- Outdoor Classroom
- Outdoor Education Program
- Performing and Visual Arts
- Reading Recovery
- Choir
- Clubs: Chess, Intramurals, UNESCO
- Before, Noon and After School
- Daycare
- Lunch Program

## **CARPATHIA**

**488-4514**

Ward One



Fax: 489-3048

300 Carpathia Road

Winnipeg, Manitoba R3N 1T3

e-mail: carpathia@wsd1.org

**Principal**

Holly Mackie

**Superintendent**

Robert Chartrand

Parent Council

### **Grades N-6**

- English Program
- Basic French Language
- English-as-an-Additional Language Program
- Enrichment Program
- Gifted and Talented
- Home Reading Program
- Literacy Through the Arts Program (Integrated)
- Phonemic Awareness
- Reading Recovery
- South District Low Enrolment Program
- Choir
- Geography, Chess, Craft Clubs
- Dance
- Drama
- Child-Parent Mother Goose Program
- Daycare
- Lunch Program

# Schools Schools Schools Schools Schools

---

## **CECIL RHODES**

**783-9012**

Ward Two



Fax: 775-5438  
1570 Elgin Avenue West  
Winnipeg, Manitoba R3E 1C2  
e-mail: cecilrhodes@wsd1.org

**Principal** Marcey Dveris  
**Vice-Principal** Ryan Hughes  
**Superintendent** Celia Caetano-Gomes  
Parent Council

### **Grades N-9**

- English Program
- Basic French Language
- ABC (Alternative Behaviour Centre)
- Community Support Worker
- Elementary/Jr. High Counselling
- Enrichment Program
- Gifted and Talented
- Home Reading Program
- Integrated Special Education Services
- Outdoor Education Program
- Off-Campus Program
- Performing and Visual Arts
- Phonemic Awareness
- Reading Recovery
- School to Work Transition
- Special Education Centre
- Band
- Choir
- Dance
- Drama
- Lunch Program

## **CHAMPLAIN**

**586-5139**

Ward Three

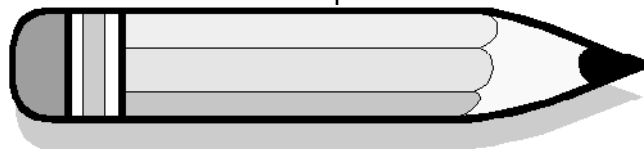


Fax: 589-4607  
275 Church Avenue  
Winnipeg, Manitoba R2W 1B7  
e-mail: champlain@wsd1.org

**Principal** Maxine Bell  
**Superintendent** Dushant Persaud  
Parent Council

### **Grades N-6**

- English Program
- Basic French Language
- Community Support Worker
- Enrichment Program
- Gifted and Talented
- Home Reading Program
- Home visitor/visits
- Integrated Adaptive Skills Program
- Integrated Special Education Services
- Phonemic Awareness
- Reading Recovery
- School Resource Officer
- School Support Worker
- Breakfast Program
- Healthy Buddies Program
- Positive Behaviour Support
- Choir
- Clubs: Pow Wow, Drum Group
- Dance (Hip Hop)
- Before, Noon and After School Program
- Daycare
- Family Room
- Lunch Program



# Schools Schools Schools Schools Schools

---

## CHILDREN OF THE EARTH

589-6383

Ward Three



Fax: 589-4822  
100 Salter Street  
Winnipeg, Manitoba R2W 4J6  
e-mail: cote@wsd1.org

**Principal** Lorne Belmore  
**Superintendent** Karin Seiler  
Parent Council

### Grades 9-12 (Semester)

- Cree and Ojibwe Heritage Languages
- Integrated Special Education Services
- All Girls Program - Ka-mah-mo-beyot ikwezansuk — Gr. 9
- University One Program
- Youth Opportunity Project — Student Employment
- Daytime Dual Credit Program - University of Manitoba
- Career Intern
- School Support Worker
- School Resource Officer
- Medical Career Exploration Program

## CHURCHILL

474-1301

Ward One



Fax: 452-5943  
510 Hay Street  
Winnipeg, Manitoba R3L 2L6  
e-mail: churchill@wsd1.org

**Principal** Michel Chartrand  
**Vice-Principal** Joyce Wong  
**Superintendent** Robert Chartrand  
Parent Council

### Grades 7-12

- English Program
- Basic French Language
- Advanced Placement
- Career Intern
- Dual Credit Program - (U or M, U of W)
- English-as-an-Additional Language (EAL)
- Elementary/Jr. High Counselling
- Flexible Learning Program (Gr. 7-10)
- Integrated Adaptive Skills Program
- Integrated Special Education Services
- Learning Assistance Centre
- Life Skills Program
- Mentorship Program
- Off-Campus Program
- Performing and Visual Arts
- School Resource Officer
- School to Work Transition
- Senior Apprenticeship Program
- Special Education Centre
- Band
- Choir
- Clubs: Robotics, Yearbook, Women's Issues
- Drama
- Improv
- Teen Clinic

# Schools Schools Schools Schools Schools

---

## CLIFTON 783-7792

Ward Two

Fax: 783-9078  
1070 Clifton Street  
Winnipeg, Manitoba R3E 2T7  
e-mail: [clifton@wsd1.org](mailto:clifton@wsd1.org)

**Principal** Mary-Jo Hodge  
**Superintendent** Celia Caetano-Gomes  
Parent Council

### Grades N-6

- English Program
- Basic French Language
- ABC (Alternative Behaviour Centre)
- English-as-an-Additional Language Program
- Home Reading Program
- Integrated Special Education Services
- Phonemic Awareness
- Reading Recovery
- Choir
- Clubs: Bell Group, Orff, Recorder
- Child-Parent Mother Goose Program
- Read With Me Program
- Lunch Program

## COLLÈGE CHURCHILL 474-1305

Ward One

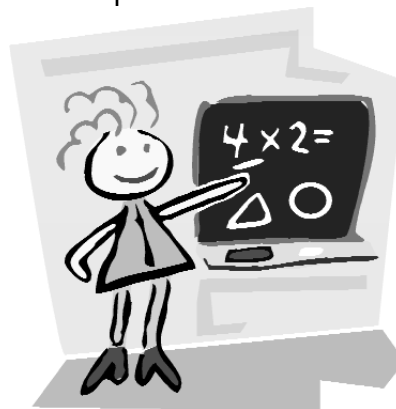


Fax: 452-0290  
510 Hay Street - Lower Level  
Winnipeg, Manitoba R3L 2L6  
e-mail: [collegechurchill@wsd1.org](mailto:collegechurchill@wsd1.org)

**Principal** Josie Audino  
**Superintendent** Robert Chartrand  
Parent Council

### Grades 7-12

- French Immersion Milieu
- Dual Credit Program - (U or M, U of W)
- Gifted and Talented
- School Resource Officer
- School to Work Transition
- Senior Apprenticeship Program
- Band
- Choir
- Clubs: Robotics, Chess, Jeunes eco-civistes
- Drama
- Youth in Philanthropy



# Schools Schools Schools Schools Schools

---

## DANIEL MCINTYRE

783-7131

Ward Two



Fax: 783-9286  
720 Alverstone Street  
Winnipeg, Manitoba R3E 2H1  
e-mail: dmci@wsd1.org

**Principal** Gilles Beaumont  
**Vice-Principals** Olga Zaporzan  
Bryan Magnusson  
**Superintendent** Celia Caetano-Gomes  
Parent Council

### Grades 9-12 (Semester)

- English Program
- Basic French Language
- Advanced Placement
- Career Intern
- Community Support Worker
- Co-op Work Experience
- Dual Credit Program - (U or M, U of W)
- English-as-an-Additional Language Program
- Enrichment Program
- Gifted and Talented
- Integrated Special Education Services
- Life Skills Program
- Media Studies/Film Studies
- Mentorship Program
- Performing and Visual Arts
- School to Work Transition
- Special Education Centre
- Band
- Choir
- Dance
- Drama
- Youth in Philanthropy
- Before, Noon and After School Program

## DAVID LIVINGSTONE

586-8346

Ward Three

Fax: 582-0383  
270 Flora Avenue  
Winnipeg, Manitoba R2W 2P9  
e-mail: dl@wsd1.org

**Principal** Debbie Lenhardt Mair  
**Vice-Principal** Dennis Perron  
**Superintendent** Karin Seiler  
Parent Gatherings

### Grades N-8

- English Program
- Bridges FASD Programs
- CHOICES Youth Program
- Community Support Worker
- English-as-an-Additional Language Program
- Families and Schools Together (FAST)
- Gifted and Talented
- Home Reading Program
- Integrated Special Education Services
- Mentorship Program
- Outdoor Classroom
- Phonemic Awareness
- Reading Recovery
- School Resource Officer
- School to Work Transition
- Clubs: Various Noon-Hour/After School
- Before, Noon and After School Program
- Child-Parent Mother Goose Program
- Family Room

# Schools Schools Schools Schools Schools

---

## DUFFERIN 774-3409

Ward Two

Fax: 774-6109  
545 Alexander Avenue  
Winnipeg, Manitoba R3A 0P1  
e-mail: dufferin@wsd1.org

**Principal** Suni Matthews  
**Vice-Principal** Wayne Wyke  
**Superintendent** Karin Seiler  
Parent/Community Partnerships

### Grades N-6

- English Program
- Enrichment Program
- Families and Schools Together (FAST)
- Gifted and Talented
- Home Reading Program
- Home visitor/visits
- Integrated Special Education Services
- Learning through the Arts Program
- Literacy Through the Arts Program (Integrated)
- Mentorship Program
- Outdoor Classroom
- Performing and Visual Arts
- Phonemic Awareness
- Primary Language Centre
- School Resource Officer
- School to Work Transition
- Media Arts/Technology
- S.T.A.R.S. (Strategies•Techniques•Attitude•Responsibility•Success)
- Choir
- Clubs: Rock Band, Wii, Running
- Dance
- Drama
- Before, Noon and After School Program
- Daycare
- Lunch Program

## EARL GREY 474-1441

Ward One

Fax: 453-4054  
340 Cockburn Street N.  
Winnipeg, Manitoba R3M 2P5  
e-mail: earlgrey@wsd1.org

**Principal** Gail Singer  
**Superintendent** Robert Chartrand  
Parent Council

### Grades N-8

- English Program
- Alternative Program
- Basic French Language
- All Girls Classes (Grades 7 and 8)
- Learning Assistance Centre
- Elementary/Jr. High Counselling
- Gifted and Talented
- Home Reading Program
- Band
- Clubs: Computer, Student Council, Sports
- Before, Noon and After School Program
- Daycare



# Schools Schools Schools Schools Schools

---

## ELMWOOD

667-8823

Ward Three

Fax: 654-0028  
505 Chalmers Avenue  
Winnipeg, Manitoba R2L 0G4  
e-mail: elmwood@wsd1.org

**Principal** Mike Babb  
**Vice-Principals** Rick Horaska  
Rosanna Guzzi  
**Superintendent** Celia Caetano-Gomes  
Parent Council  
Band Parent Council

### Grades 7-12 (Semester 9-12)

- English Program
- Adaptive Skills Program
- Advanced Placement
- Career Intern
- CHOICES Youth Program
- English-as-an-Additional Language Program
- Enrichment Program
- Flexible Learning Program (Gr. 7-10)
- Gifted and Talented
- Infant Development Lab
- Integrated Special Education Services
- Learning Assistance Centre
- Life Skills Program
- Media Studies/Film Studies
- Outdoor Education Program
- Off-Campus Program
- Performing and Visual Arts
- School to Work Transition
- Special Education Centre
- Band
- Clubs: Student Council, Chess, Gay Straight Alliance
- Dance
- Drama
- Teen Clinic

## FARADAY

586-8583

Ward Three



Fax: 589-7731  
405 Parr Street  
Winnipeg, Manitoba R2W 5G1  
e-mail: faraday@wsd1.org  
www.wsd1.org/faraday

**Principal** Richard Cockrem  
**Superintendent** Dushant Persaud  
Parent Council

### Grades N-6

- English Program
- Dental Program
- Enrichment Program
- Gifted and Talented
- Home Reading Program
- Home visitor/visits
- Integrated Special Education Services
- Learning Assistance Centre
- Lions-Quest
- Literacy Through the Arts Program (Integrated)
- Performing and Visual Arts
- Phonemic Awareness
- Special Education Centre
- Choir
- Clubs: Water Polo, Intramurals, Skating
- Drama
- Child-Parent Mother Goose Program
- Family Room
- Lunch Program

# Schools Schools Schools Schools Schools

---

## **FORT ROUGE**

**475-5057**

Ward One



Fax: 477-9050  
115 River Avenue  
Winnipeg, Manitoba R3L 0A8  
e-mail: [fortrouge@wsd1.org](mailto:fortrouge@wsd1.org)

**Principal** Leslie Maxwell-Joseph  
**Superintendent** Karin Seiler  
Parent Council

### **Grades N-6**

- English Program
- Basic French Language
- Community Support Worker
- English-as-an-Additional Language Program
- Gifted and Talented
- Home Reading Program
- Home visitor/visits
- Integrated Special Education Services
- Learning through the Arts Program
- Phonemic Awareness
- School to Work Transition
- Clubs: Computer, Taekwondo, Lighthouse Program
- Before, Noon and After School Program
- Daycare: Maybrook Daycare
- Lunch Program/Breakfast Program

## **GARDEN GROVE**

**633-6477**

Ward Three



Fax: 632-6032  
2340 Burrows Avenue  
Winnipeg, Manitoba R2R 1W1  
e-mail: [gardengrove@wsd1.org](mailto:gardengrove@wsd1.org)

**Principal** Paul Sutherland  
**Vice-Principal** Michelle Jean-Paul Burnett  
**Superintendent** Dushant Persaud  
Parent Council

### **Grades N-6**

- English-French Immersion Dual Track
- Early Years Behaviour Class (EYBC)
- Enrichment Program
- Home Reading Program
- Integrated Special Education Services
- Outdoor Education Program
- Reading Recovery
- Choir
- Clubs: Orff Club, Intramurals
- Dance
- Youth in Philanthropy
- Daycare: Garden Grove Daycare
- Lunch Program

# Schools Schools Schools Schools Schools

---

## GENERAL WOLFE

786-7427

Ward Two



Fax: 775-2882  
661 Banning Street  
Winnipeg, Manitoba R3G 2G3  
e-mail: generalwolfe@wsd1.org

**Principal** Gwen McLean  
**Vice-Principal** Jayesh Maniar  
**Superintendent** Karin Seiler  
Parent Council

### Grades 7-9

- English Program
- Basic French Language
- CHOICES Youth Program
- Community Support Worker
- English-as-an-Additional Language Program
- Jr. High Counselling
- Gifted and Talented
- Integrated Special Education Services
- Medical Internship Program
- Performing and Visual Arts
- School Support Worker
- Special Education Centre
- Video Recording
- Jazz Band
- Cross Cultural/Native Studies
- Band
- Choir
- Clubs: Guitar, Boys' and Girls' Sharing Circle, Steel Pan Drumming
- Dance
- Drama
- Lunch Program

## GEORGE V

669-4482

Ward Three

Fax: 654-2891  
265 Grey Street  
Winnipeg, Manitoba R2L 1V6  
e-mail: cklawuhn@wsd1.org

**Principal** Gisele Mospanchuk  
**Superintendent** Celia Caetano-Gomes  
Parent Council

### Grades N-6

- English-French Immersion Dual Track
- Basic French Language (4-6)
- ABC (Alternative Behaviour Centre)
- Elementary Counselling
- Enrichment Program
- Gifted and Talented
- Home visitor/visits
- Outdoor Classroom
- Reading Recovery
- Special Education Centre
- Clubs: Fit Run/Fit Club, Leadership
- Before, Noon and After School Program (Elmwood Before, Noon and After School)
- Daycare: Munroe Before and After
- Lunch Program

# Schools Schools Schools Schools Schools

---

## **GLADSTONE**

**475-4767**

Ward One



Fax: 475-5687  
500 Gertrude Avenue  
Winnipeg, Manitoba R3L 0M8  
e-mail: gladstone@wsd1.org

**Principal** Donna Miller  
**Superintendent** Robert Chartrand  
Parent Council

### **Grades N-6**

- English Program
- English-as-an-Additional Language Program
- Home Reading Program
- Integrated Special Education Services
- Primary Language Centre
- Reading Recovery
- S.T.A.R.S. (Strategies•Techniques•Attitude•Responsibility•Success)
- Lunch Program

## **GLENELM**

**667-8534**

Ward Three

Fax: 654-2892  
96 Carmen Avenue  
Winnipeg, Manitoba R2L 0E6  
e-mail: glenelm@wsd1.org

**Principal** Brian Peterson  
**Superintendent** Celia Caetano-Gomes  
Parent Council

### **Grades N-6**

- English Program
- Basic French Language
- Gifted and Talented
- Home Reading Program
- Integrated Special Education Services
- Performing and Visual Arts
- Reading Recovery
- Student Leadership Program
- Early Years Home Learning Assistant
- Integrated Library/Media Centre
- Choir
- Clubs: After School Clubs
- Child-Parent Mother Goose Program
- Daycare: Before and After School
- Lunch Program

# Schools Schools Schools Schools Schools

---

## **GORDON BELL**

774-5401

Ward Two



Fax: 783-9469  
3 Borrowman Place  
Winnipeg, Manitoba R3G 1M6  
e-mail: gboffice@wsd1.org

**Principal** Arlene Skull  
**Vice-Principals** Audrey Dysart  
Aaron Benarroch  
**Superintendent** Karin Seiler

### **Grades 7-12**

- English Program
- Basic French Language
- Adaptive Skills Program
- Advanced Placement
- Career Intern
- CHOICES Youth Program
- Community Support Worker
- English-as-an-Additional Language Program
- Enrichment Program
- Flexible Learning Program (Gr. 7-10)
- Gifted and Talented
- Infant Development Lab
- Learning Assistance Centre
- Life Skills Program
- Outdoor Education Program
- Off-Campus Program
- Performing and Visual Arts
- School Resource Officer
- School Support Worker
- School to Work Transition
- Special Education Centre
- Band
- Choir
- Dance
- Drama

## **GRANT PARK**

452-3112

Ward One



Fax: 477-5633  
450 Nathaniel Street  
Winnipeg, Manitoba R3M 3E3  
e-mail: grantpark@wsd1.org

**Principal** Yale Chochinov  
**Vice-Principals** Greg Bouchard  
Cristina Da Mata  
**Superintendent** Robert Chartrand  
Parent Council

### **Grades 7-12 (Semester)**

- English Program
- Adaptive Skills Program
- Advanced Placement
- Autism Program/Centre
- Career Intern
- Community Support Worker
- English-as-an-Additional Language Program
- Enrichment Program
- Flexible Learning Program (Gr. 7-10)
- Integrated Adaptive Skills Program
- Integrated Special Education Services
- Learning Assistance Centre
- Life Skills Program
- Mentorship Program
- Off-Campus Program
- Performing and Visual Arts
- School Resource Officer
- School to Work Transition
- Senior Apprenticeship Program
- Band
- Choir
- Clubs: Guitar, Carpentry, Computer Games
- Dance
- Drama
- Improv

# Schools Schools Schools Schools Schools

---

## GREENWAY

775-2455

Ward Two

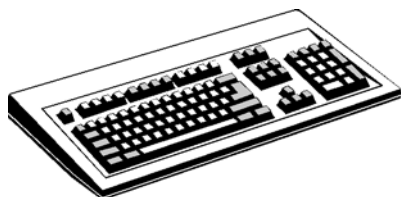


Fax: 783-9544  
390 Burnell Street  
Winnipeg, Manitoba R3G 2A8

**Principal** Barb Myron  
**Vice-Principal** Patricia Mousseau  
**Superintendent** Celia Caetano-Gomes  
Parent Council

### Grades N-6

- English Program
- Adaptive Skills Program
- Autism Program/Centre
- Dental Program
- Elementary Counselling
- Gifted and Talented
- Home Reading Program
- Home visitor/visits
- Integrated Adaptive Skills Program
- Integrated Special Education Services
- Learning Assistance Centre
- Lions-Quest
- Literacy Through the Arts Program (Integrated)
- Outdoor Education Program
- Performing and Visual Arts
- Phonemic Awareness
- Aboriginal Cultural Advisor
- Choir
- Child-Parent Mother Goose Program
- Family Room
- Lunch Program



## GROSVENOR

475-5242

Ward One

Fax: 477-6166  
1045 Grosvenor Avenue  
Winnipeg, Manitoba R3M 0M8  
e-mail: grosvenor@wsd1.org

**Principal** Brad Corbett  
**Superintendent** Robert Chartrand  
Parent Council

### Grades N-6

- English Program
- American Sign Language Program
- Basic French Language
- Deaf and Hard of Hearing Program
- Enrichment Program
- Home Reading Program
- Integrated Special Education Services
- Literacy Through the Arts Program (Integrated)
- Mentorship Program
- Performing and Visual Arts
- Phonemic Awareness
- Reading Recovery
- Clubs: Yoga, Chess, Drama
- Dance
- Before, Noon and After School Program
- Daycare
- Lunch Program

# Schools Schools Schools Schools Schools

---

## HARROW

453-3347

Ward One



Fax: 453-1135  
550 Harrow Street  
Winnipeg, Manitoba R3M 3A2  
e-mail: harrow@wsd1.org

**Principal** Laurie MacDonald  
**Superintendent** Robert Chartrand  
Parent Council

### Grades N-6

- English Program
- Basic French Language
- English-as-an-Additional Language Program
- Home Reading Program
- Integrated Special Education Services
- Literacy Through the Arts Program (Integrated)
- Outdoor Education Program
- SMART Board Programming
- Computer Enrichment Supports
- Choir
- Clubs: Chess, MYRCA, Intramural Sports
- Dance
- Daycares: Harrow Daycare, Carter Daycare
- Lunch Program

## HUGH JOHN MACDONALD

786-5631

Ward Two

Fax: 783-6473  
567 Bannatyne Avenue  
Winnipeg, Manitoba R3A 0G8  
e-mail: hjm@wsd1.org  
website: www.wsd1.org/HughJohn/

**Principal** Vinh Huynh  
**Vice-Principal** Rhona Churman  
**Superintendent** Karin Seiler  
Parent Council

### Grades 7-9

- English Program
- Basic French
- CHOICES Youth Program
- Community Support Worker
- English-as-an-Additional Language Program
- Jr. High Counselling
- Enrichment Program
- Home visitor/visits
- Infant Development Lab
- Integrated Special Education Services
- Learning Assistance Centre
- Life Skills Program
- Outdoor Education Program
- Off-Campus Program
- Performing and Visual Arts
- School Resource Officer
- School Support Worker
- School to Work Transition
- Special Education Centre
- Clubs: Homework, Conversational Language Classes, Intramurals
- Dance
- Drama
- Before, Noon and After School Program
- Weekend Language School for Students (Portuguese and Somalian)

# Schools Schools Schools Schools Schools

---

## **INKSTER**

**589-4383**

Ward Three



Fax: 582-1736  
633 Inkster Boulevard  
Winnipeg, Manitoba R2W 0L3  
e-mail: inkster@wsd1.org

**Principal** Sandra Intrater  
**Superintendent** Dushant Persaud  
Parent Council

### **Grades N-6**

- English Program
- Adaptive Skills Program
- Autism Program/Centre
- Dental Program
- English-as-an-Additional Language Program
- Enrichment Program
- Gifted and Talented
- Home Reading Program
- Home visitor/visits
- Integrated Adaptive Skills Program
- Integrated Special Education Services
- Outdoor Education Program
- Phonemic Awareness
- Reading Recovery
- School Resource Officer
- Inclusive Philosophy
- Choir
- Clubs
- Child-Parent Mother Goose Program
- Daycare: Inkster Community Child Care Inc.
- Lunch Program

## **ISAAC BROCK**

**772-9527**

Ward Two

Fax: 783-1806  
1265 Barratt Avenue  
Winnipeg, Manitoba R3G 0L9  
e-mail: isaacbrock@wsd1.org

**Principal** Sherry Anderson  
**Vice-Principal** Ara Morris  
**Superintendent** Celia Caetano-Gomes  
Parent Council

### **Grades N-9**

- English Program
- Basic French Language
- Alternative Program
- Integrated Special Education Services
- Learning Assistance Centre
- Special Education Centre
- Primary Language Centre
- Music
- Band
- Choir
- Clubs: Noon Hour
- Reading Recovery
- Lunch Program

# Schools Schools Schools Schools Schools

---

## **ISAAC NEWTON**

**586-9606**

Ward Three

Fax: 589-5153  
730 Aberdeen Avenue  
Winnipeg, Manitoba R2W 1W9  
e-mail: [spekrul@wsd1.org](mailto:spekrul@wsd1.org)

**Principal** Sharon Pekrul  
**Vice-Principal** Randy Routledge  
**Superintendent** Dushant Persaud  
Parent Council

### **Grades 7-9**

- English Program
- Cree and Ojibwe Heritage Languages
- Community Support Worker
- Jr. High Counselling
- Enrichment Program
- Gifted and Talented
- Integrated Special Education Services
- Learning Assistance Centre
- Mentorship Program
- Outdoor Education Program
- Off-Campus Program
- School Resource Officer
- Special Education Centre
- Tagalog
- Low Enrolment Alternative Program
- Industrial Arts
- Band
- Choir
- Clubs: Pow Wow, Homework Hut, MYRCA and CanSpell
- Dance
- Drama
- Improv
- Before, Noon and After School Program
- Lunch Program

## **J.B. MITCHELL**

**488-4517**

Ward One

Fax: 488-1465  
1720 John Brebeuf Place  
Winnipeg, Manitoba R3N 0M1  
e-mail: [jbmitchell@wsd1.org](mailto:jbmitchell@wsd1.org)

**Principal** Marie-France Giasson  
**Vice-Principal** Shawn Gretchen  
**Superintendent** Robert Chartrand  
Parent Council

### **Grades N-6**

- English-French Immersion Dual Track
- American Sign Language Program
- Basic French Language
- Deaf and Hard of Hearing Program
- English-as-an-Additional Language Program
- Enrichment Program
- Gifted and Talented
- Home Reading Program
- Literacy Through the Arts Program (Integrated)
- Mentorship Program
- Outdoor Classroom
- Outdoor Education Program
- Performing and Visual Arts
- Phonemic Awareness
- Reading Recovery
- Choir
- Clubs: Intramurals, Crib, ASL, Philanthropy
- Youth in Philanthropy
- Daycare
- Lunch Program

# Schools Schools Schools Schools Schools

---

## JOHN M. KING

775-4404

Ward Two

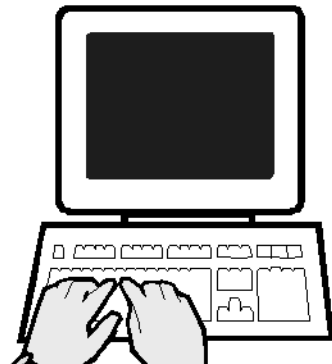


Fax: 772-6931  
525 Agnes Street  
Winnipeg, Manitoba R3G 1N7  
e-mail: jmking@wsd1.org

**Principal** Lucy Schnaider  
**Vice-Principal** Andrea Powell  
**Superintendent** Karin Seiler  
Parent Advisory

### Grades N-6

- English Program
- Community Support Worker
- English-as-an-Additional Language Program
- Enrichment Program
- Gifted and Talented
- Home Reading Program
- Integrated Special Education Services
- Learning Assistance Centre
- Learning through the Arts Program
- Outdoor Education Program
- Reading Recovery
- School Resource Officer
- School to Work Transition
- Choir
- Clubs: Pow Wow, Handbells
- Daycare: St. Matthews Kids Korner Inc. (as of January 2010)
- Family Room
- Lunch Program



## KELVIN

474-1492

Ward One



Fax: 453-2116  
155 Kingsway  
Winnipeg, Manitoba R3M 0G3  
e-mail: kelvin@wsd1.org

**Principal** Jim Brown  
**Vice-Principals** Kim Gauthier  
Maria Silva  
**Superintendent** Robert Chartrand  
Parent Council

### Grades 9-12 (Semester)

- English-French Immersion Dual Track
- Basic French Program
- International Baccalaureate
- Deaf and Hard of Hearing Program
- Gifted and Talented
- Integrated Special Education Services
- Spanish Heritage Language
- Asia Pacific Studies
- English-as-an-Additional Language Program
- Performing and Visual Arts
- Band
- Choir
- Drama
- Improv
- Cafeteria Services

# Schools Schools Schools Schools Schools

---

## KENT ROAD

669-1228

Ward Three



Fax: 654-2897  
361 Kent Road  
Winnipeg, Manitoba R2L 1X9

**Principal** Daphne Nordal  
**Superintendent** Celia Caetano-Gomes  
Parent Council

### Grades N-6

- English Program
- Elementary Counselling
- Home Reading Program
- Home visitor/visits
- Integrated Special Education Services
- Learning Assistance Centre
- Phonemic Awareness
- Reading Recovery
- Artists In The School
- Partners and Learning (PAL)
- Roots of Empathy
- Choir
- Youth in Philanthropy
- Daycare: Before and After School Program
- Lunch Program (Parent Run)

## KING EDWARD

586-8381

Ward Three



Fax: 586-3984  
825 Selkirk Avenue  
Winnipeg, Manitoba R2X 2Y6  
e-mail: kingedward@wsd1.org

**Principal** Spencer Clements  
**Vice-Principal** Leslie Last  
**Superintendent** Karin Seiler  
Parent Council

### Grades N-6

- English Program
- Learning through the Arts Program
- Conflict Managers
- Integrated Special Education Services
- Parent and Child Literacy Program
- School Support Worker
- Music Program
- Clubs: Computer, Spelling, Chess
- Breakfast Program
- Lunch Program (Parent Run)
- After School Programs

# Schools Schools Schools Schools Schools

---

## LANSDOWNE

338-7039

Ward Three



Fax: 334-3561  
715 Wiginton Street  
Winnipeg, Manitoba R2X 2G2  
e-mail: lansdowne@wsd1.org

**Principal** Chantelle Deslauriers-Gray  
**Vice-Principal** Manuel Silva  
**Superintendent** Dushant Persaud  
Parent Council

### Grades N-8

- French Immersion Milieu
- French Nursery
- English-as-an-Additional Language Program
- Elementary/Jr. High Counselling
- Enrichment Program
- Home Reading Program
- Home visitor/visits
- Integrated Special Education Services
- Mentorship Program
- Outdoor Education Program
- School to Work Transition
- Conflict Managers
- Student Council/Leadership Program
- Active Green Initiatives
- Jr. High Band + Music Through Technology
- Dance
- Drama
- Lunch Program

## LAURA SECORD

786-4796

Ward Two



Fax: 783-7607  
960 Wolseley Avenue  
Winnipeg, Manitoba R3G 1E7  
e-mail: las@wsd1.org

**Principal** Roberta Hechter  
**Vice-Principal** Paulette Huggins  
**Superintendent** Celia Caetano-Gomes  
Parent Council

### Grades N-6

- English-French Immersion Dual Track
- Basic French Language
- Alternative Program (Gr. 1-6)
- English-as-an-Additional Language Program
- Elementary Counselling
- Enrichment Program
- Gifted and Talented
- Home Reading Program
- Integrated Special Education Services
- Literacy Through the Arts Program (Integrated)
- Outdoor Classroom
- Performing and Visual Arts
- Phonemic Awareness
- Reading Recovery
- Technology Integration
- Green School
- Recess Buddies
- Choir
- Handbells
- Clubs: Chess, Art & Dance, Pythagorus
- Dance
- Drama
- Youth in Philanthropy
- Before and After School Program (Run by the YM-YWCA)
- Lunch Program

# Schools Schools Schools Schools Schools

---

## LAVÉRENDRYE

452-5015

Ward One

Fax: 452-2742  
290 Lilac Street  
Winnipeg, Manitoba R3M 2T5  
website: [www.wsd1.org/laverendrye](http://www.wsd1.org/laverendrye)

**Principal** Vince Audino  
**Superintendent** Robert Chartrand  
Community Council

### Grades N-6

- French Immersion Milieu
- French Immersion Nursery
- Enrichment Program
- Gifted and Talented
- Heritage Classroom
- Home Reading Program
- Outdoor Classroom
- Outdoor Education Program
- Reading Recovery
- Choir
- Clubs: Chess, Guitar, Knitting
- Before, Noon and After School Program
- Lunch Program

## LORD NELSON

586-9625

Ward Three

Fax: 582-6558  
820 McPhillips Street  
Winnipeg, Manitoba R2X 2J7  
e-mail: [lordnelson@wsd1.org](mailto:lordnelson@wsd1.org)

**Principal** Luba Krosney  
**Vice-Principal** John Millen  
**Superintendent** Dushant Persaud  
Parent Association

### Grades N-6

- English Program
- Basic French Language
- Community Support Worker
- Dental Program
- English-as-an-Additional Language Program
- Elementary Counselling
- Enrichment Program
- Gifted and Talented
- Home Reading Program
- Home visitor/visits
- Integrated Special Education Services
- Later Literacy
- Learning Assistance Centre
- Outdoor Classroom
- Outdoor Education Program
- Phonemic Awareness
- Reading Recovery
- Special Education Centre
- Character Education Program
- Bullying Prevention Program
- Filipino Heritage Language Program
- Choir
- Clubs: Intramurals, Technology, Running
- Child-Parent Mother Goose Program
- Lunch Program

# Schools Schools Schools Schools Schools

---

## LORD ROBERTS

453-6639

Ward One



Fax: 475-0089  
665 Beresford Avenue  
Winnipeg, Manitoba R3L 1J9  
e-mail: lordroberts@wsd1.org

**Principal** Rosalind Moore  
**Vice-Principal** Tony Marchione  
**Superintendent** Robert Chartrand  
Parent Council

### Grades N-6

- English Program
- Basic French Language
- Integrated Adaptive Skills Program
- Literacy Through the Arts Program (Integrated)
- Outdoor Education Program
- Phonemic Awareness
- Reading Recovery
- S.T.A.R.S. (Strategies•Techniques•Attitude•Responsibility•Success)
- Guided Reading
- Conflict Managers
- Band (Steel Drum)
- Choir
- Clubs: Kids in the Kitchen, Vermi-Compost, Sports Clubs
- Before, Noon and After School Program
- Child-Parent Mother Goose Program
- Daycare
- Family Room
- Lunch Program

## LORD SELKIRK

667-8495

Ward Three



Fax: 667-0753  
170 Poplar Avenue  
Winnipeg, Manitoba R2L 2B6  
e-mail: lordselkirk@wsd1.org

**Principal** Stormie Duchnycz  
**Superintendent** Celia Caetano-Gomes  
Parent Council

### Grades N-6

- English Program
- Basic French Language
- Computer Lab Program
- Conflict Managers
- Alternative Program
- English-as-an-Additional Language Program
- Gifted and Talented
- Integrated Special Education Services
- Phonemic Awareness
- Reading Recovery
- Diagnostic Learning Centre
- Home Learning Assistant Program (preschool)
- Community Support Worker
- Lunch Program (Parent Council Run)
- Before & After School (run by *Poplar Avenue Kids Care*)

# Schools Schools Schools Schools Schools

---

## LUXTON

589-4368

Ward Three

Fax: 586-2450  
111 Polson Avenue  
Winnipeg, Manitoba R2W 0M5  
e-mail: luxton@wsd1.org

**Principal** Rita Trautmann  
**Superintendent** Dushant Persaud  
Parent Council

**Grades N-6**

- English Program
- Basic French Language
- Alternative Program (Gr. 1-6)
- Dental Program
- Gifted and Talented
- Home Reading Program
- Home visitor/visits
- Integrated Special Education Services
- Learning Assistance Centre
- Lions-Quest
- Outdoor Education Program
- Phonemic Awareness
- Reading Recovery
- School Resource Officer
- Special Education Centre
- North District Behaviour Support Team
- Clubs: Performing Arts Group, Games, Intramurals
- Youth in Philanthropy
- Before, Noon and After School Program
- Daycare: Mary Kardash Child Care Center
- Family Room
- Lunch Program

## MACHRAY

586-8085

Ward Three



Fax: 589-8222  
320 Mountain Avenue  
Winnipeg, Manitoba R2W 1K1  
e-mail: machray@wsd1.org

**Principal** Gordon Armstrong  
**Superintendent** Karin Seiler  
Parent Involvement Committee

**Grades N-6**

- English Program
- Community Support Worker
- Dental Program
- Gifted and Talented
- Home Reading Program
- Integrated Special Education Services
- Learning Assistance Centre
- Phonemic Awareness
- School Resource Officer
- School to Work Transition
- Breakfast and Snack Program
- Student Portfolios
- Art Program
- Choir
- Clubs: Inner City Soccer, Cadet Corps
- Family Room
- Lunch Program

# Schools Schools Schools Schools Schools

---

## MEADOWS WEST

694-6755

Ward Three



Fax: 633-5354  
150 Inkster Garden Drive  
Winnipeg, Manitoba R2R 2R8  
e-mail: cmarchinkow@wsd1.org

**Principal** Roger Le Grand  
**Vice-Principal** Sheila Spooner  
**Superintendent** Dushant Persaud  
Parent Council

**Grades N-8**

- English Program
- Basic French Language Grades 4-6
- Gifted and Talented
- Home Reading Program
- Integrated Special Education Services
- Phonemic Awareness
- Reading Recovery
- Choir
- Dance
- Before, Noon and After School Program (Kids Kare Inc.)
- Daycare: Kids Kare Inc.
- Lunch Program (Parent Run)

## MONTROSE

488-8112

Ward One



Fax: 488-9895  
691 Montrose Street  
Winnipeg, Manitoba R3M 3M4  
e-mail: montrose@wsd1.org

**Principal** Robert Stefaniuk  
**Superintendent** Robert Chartrand  
Parent Council

**Grades N-6**

- English Program
- Basic French Language
- English-as-an-Additional Language Program
- Enrichment Program
- Gifted and Talented
- Home Reading Program
- Integrated Special Education Services
- Literacy Through the Arts Program (Integrated)
- Performing and Visual Arts
- Reading Recovery
- Special Education Centre
- Multi-age Program
- Early Years Literacy
- Choir
- Clubs: Chess, Guitar, Math
- Daycare
- Lunch Program

# Schools Schools Schools Schools Schools

---

## MULVEY

786-3469

Ward Two

Fax: 774-2894  
750 Wolseley Avenue  
Winnipeg, Manitoba R3G 1C6  
e-mail: mulvey@wsd1.org  
website: www.wsd1.org/mulvey

**Principal** Peter Correia  
**Vice-Principal** Val Mowez  
**Superintendent** Karin Seiler  
Parent Council  
**Grades N-6**

- English Program
- Community Support Worker
- English-as-an-Additional Language Program
- Enrichment Program
- Gifted and Talented
- Home Reading Program
- Home visitor/visits
- Learning Assistance Centre
- Learning through the Arts Program
- Life Skills Program
- Outdoor Education Program
- Performing and Visual Arts
- Reading Recovery
- School Resource Officer
- School Support Worker
- School to Work Transition
- Early School Years Program
- Breakfast Program
- Choir
- Clubs: Pow Wow, Athletics, Private Music Lessons
- Dance
- After School Programs
- Child-Parent Mother Goose Program
- Daycares: Westminster Day Care, Day Nursery and Cornish Daycare
- Lunch Program

## NIJI MAHKWA

589-6742

Ward Three



Fax: 582-7049  
450 Flora Avenue  
Winnipeg, Manitoba R2W 2R8  
e-mail: nijimahkwa@wsd1.org

**Principal** Rob Riel  
**Vice-Principal** Debbie Gould  
**Superintendent** Karin Seiler  
Parent Council  
**Grades N-8**

- Ojibwe/Cree Linguistic Programs
- Songide'ewin Off Campus Program
- Aboriginal Cultural Program
- Computer/Technology Program
- Classroom Resourcing Team
- Community Support Worker
- Elementary/Jr. High Counselling
- Integrated Special Education Services
- Learning Assistance Centre
- Nutrition/Breakfast Program
- Lunch Program

# Schools Schools Schools Schools Schools

---

## NORQUAY

943-9541

Ward Three



Fax: 943-4715  
132 Lusted Avenue  
Winnipeg, Manitoba R2W 2P2  
e-mail: norquay@wsd1.org

**Principal** Richard Ryland (acting)  
**Vice-Principal** Elizabeth Hasselfield (acting)  
**Superintendent** Karin Seiler  
Parent Council

### Grades N-6

- English Program
- Adaptive Skills Program
- Families and Schools Together (FAST)
- Integrated Adaptive Skills Program
- Lions-Quest
- School Resource Officer
- School Support Worker
- Choir
- Daycare: Eagle Wing Early Education Centre
- Family Room
- Lunch Program

## PINKHAM

786-5749

Ward Two



Fax: 783-0597  
765 Pacific Avenue  
Winnipeg, Manitoba R3E 1G1  
e-mail: pinkham@wsd1.org

**Principal** Brenda Langton  
**Superintendent** Karin Seiler  
Parent Council

### Grades N-6

- English Program
- Basic French Language
- Community Support Worker
- Gifted and Talented
- Home visitor/visits
- Phonemic Awareness
- Reading Recovery
- School Resource Officer
- School Support Worker
- School to Work Transition
- C.A.R.E. Pro-Social Skills Program
- Inquiry LwICT
- Martland Framework Initiative
- Restitution/Pro-social Program
- Choir
- Clubs: ORFF, Chess, Literacy
- Child-Parent Mother Goose Program
- Daycare: Pinkham
- Family Room
- Lunch Program

# Schools Schools Schools Schools Schools

---

## **PRAIRIE ROSE ELEMENTARY**

**633-4092**

Ward Three



Fax: 633-4902  
105 Lucas Avenue  
Winnipeg, Manitoba R2R 2S8  
e-mail: jpitts@wsd1.org

**Principal** Janice Pitts  
**Superintendent** Dushant Persaud  
Parent-Staff Advisory Committee

### **Grades N-6**

- English Program
- Basic French Language
- Dental Program
- Enrichment Program
- Home Reading Program
- Integrated Adaptive Skills Program
- Integrated Special Education Services
- Reading Recovery
- Clubs: ASL, Social Skills, Arts and Crafts
- Daycare: Licensed Daycare including Before and After
- Lunch Program

## **PRINCIPAL SPARLING**

**783-6195**

Ward Two

Fax: 786-6373  
1150 Sherburn Street  
Winnipeg, Manitoba R3E 2N4  
e-mail: prsparling@wsd1.org

**Principal** Lionel Pang  
**Superintendent** Celia Caetano-Gomes  
Parent Council

### **Grades N-6**

- English Program
- Basic French
- English-as-an-Additional Language Program
- Gifted/Talented
- Home Reading Program
- Integrated Special Education Services
- Special Education Centres (Primary & Intermediate)
- Drama
- Clubs: Fitness Club, ORFF Club
- Phonemic Awareness
- Reading Recovery
- Elementary Counselling
- Lunch Program (Parent Council Sponsored)
- Parks and Recreation After School Program (Mon/Wed)

# Schools Schools Schools Schools Schools

## QUEENSTON

489-3423

Ward One

Fax: 488-6839  
245 Queenston Street  
Winnipeg, Manitoba R3N 0W6  
e-mail: queenston@wsd1.org  
website: www.wsd1.org/queenst/

### Principal

Wade Gregg

### Superintendent

Robert Chartrand

Parent Council

### Grades N-6

- English Program
- Basic French
- Home Reading Program
- Outdoor Classroom
- Reading Recovery
- Enrichment Activities
- Teacher-librarian
- Subject Specialists
- Choir
- Clubs: Running Club, Intramurals, Book Club
- Daycare: Children Are People Too
- Lunch Program

## RALPH BROWN

589-7355

Ward Three



Fax: 589-0100  
460 Andrews Street  
Winnipeg, Manitoba R2W 4Y1  
website: www.wsd1.org/ralphbrown

### Principal

Karin Freiling

### Superintendent

Dushant Persaud

Parent Council and  
Ukrainian Parents' Sub-Committee

### Grades N-8

- English-Ukrainian Bilingual
- Basic French Language
- English Program
- Dental Program
- Elementary/Jr. High Counselling
- Enrichment Program
- Gifted and Talented
- Home Reading Program
- Integrated Special Education Services
- Outdoor Education Program
- Performing and Visual Arts
- Reading Recovery
- School Resource Officer
- School to Work Transition
- Effective Behaviour Systems (EBS)
- Grade 4-8 Options Program
- Band: Guitar
- Choir
- Clubs: Intramurals and Sports Teams, MYRCA Book Club, Ukrainian Dance
- Before, Noon and After School Program (After School Programs at the Ralph Brown Community Centre)
- Daycare: Machray Day Nursery
- Family Room
- Lunch Program

# Schools Schools Schools Schools Schools

---

## **R.B. RUSSELL VOCATIONAL**

**589-5301**

Ward Three

Fax: 586-1817  
364 Dufferin Avenue  
Winnipeg, Manitoba R2W 2Y3  
e-mail: rbrussell@wsd1.org  
website: rbrussell.org

**Principal** Beverly Wahl  
**Vice-Principal** Nancy Dyck  
**Superintendent** Karin Seiler  
Parent Council

### **Grades 9-12**

- English Program
- Career Intern
- Community Support Worker
- Gifted and Talented
- Home visitor/visits
- Infant Development Lab
- Integrated Special Education Services
- Learning Assistance Centre
- Outdoor Education Program
- Off-Campus Program
- Performing and Visual Arts
- School Resource Officer
- School Support Worker
- School to Work Transition
- Senior Apprenticeship Program
- Vocational Programs
- Community Action
- Clubs: Student Voice
- Drama
- Youth in Philanthropy
- Daycare
- Lunch Program
- Teen Clinic

## **RIVER ELM**

**667-9006**

Ward Three

Fax: 654-2899  
500 Riverton Avenue  
Winnipeg, Manitoba R2L 0N9  
e-mail: riverelm@wsd1.org

**Principal** Thomas V. Chan  
**Superintendent** Celia Caetano-Gomes  
Parent Advisory Council

### **Grades N-6**

- English Program
- Basic French Language
- English-as-an-Additional Language Program
- Community Support Worker
- Home Reading Program
- Integrated Special Education Services
- Lions-Quest
- Reading Recovery Program
- Comprehensive Literacy Plans in English Language Arts, Mathematics and Information Communication Technology
- Literacy Lab
- Conflict Managers
- Choir
- Clubs: Walking
- Literacy with Information and Communications Technology (ICT)
- Lunch Program (Parent Run)

# Schools Schools Schools Schools Schools

---

## RIVER HEIGHTS

488-7090

Ward One



Fax: 488-6421  
1350 Grosvenor Avenue  
Winnipeg, Manitoba R3M 0P2  
e-mail: river\_heights@wsd1.org

**Principal** Susan Anderson  
**Vice-Principal** Jamie Hutchison  
**Superintendent** Robert Chartrand  
Parent Council

### Grades 7-8

- English-French Immersion Dual Track
- Late Entry French Immersion
- Deaf and Hard of Hearing Program
- Integrated Special Education Services
- Learning Assistance Centre
- Spanish Heritage Language
- English-as-an-Additional Language Program
- Enrichment Program
- Bands: Jazz, Concert Band
- Performing and Visual Arts
- Jr. High Counselling
- Peer Helper Program
- Technology Integration Program
- Inclusive Physical Education Extra-Curricular Program

## RIVERVIEW

284-5983

Ward One



Fax: 284-8326  
253 Maplewood Avenue  
Winnipeg, Manitoba R3L 2L4  
e-mail: riverview@wsd1.org

**Principal** Grant Bridgeman  
**Vice-Principal** Lise Bjarnason  
**Superintendent** Robert Chartrand  
Parent Council

### Grades N-6

- English-French Immersion Dual Track
- Basic French Language
- Home Reading Program
- Integrated Special Education Services
- Reading Recovery
- Integrated Technology, SMARTboards
- Student Leadership Program
- Anti-Bullying Program
- Choirs
- Before and After School Program
- Lunch Program

# Schools Schools Schools Schools Schools

---

## ROBERT H. SMITH

488-1137

Ward One



Fax: 487-1463

315 Oak Street

Winnipeg, Manitoba R3M 3P8

e-mail: rhsmith@wsd1.org

**Principal**

Tom Rossi

**Vice-Principal**

Claudette Warnke

**Superintendent**

Robert Chartrand

Parent Council

### Grades N-6

- English-French Immersion Dual Track
- Basic French Language
- Enrichment Program
- Gifted and Talented
- Home Reading Program
- Integrated Special Education Services
- Literacy Through the Arts Program (Integrated)
- Outdoor Classroom
- Performing and Visual Arts
- Phonemic Awareness
- Reading Recovery
- Choir
- Clubs: Mad Science, Camera, Track
- Dance
- Drama
- Youth in Philanthropy
- Child-Parent Mother Goose Program
- Daycares - Close By
- Lunch Program

## ROBERTSON

589-4745

Ward Three



Fax: 589-7293

550 Robertson Street

Winnipeg, Manitoba R2X 2C4

e-mail: robertson@wsd1.org

**Principal**

Pamela Ball

**Vice-Principal**

Elaine McKenna

**Superintendent**

Dushant Persaud

Parent Council

### Grades N-6

- English Program
- Basic French Language
- Autism Program/Centre
- Dental Program
- Home Reading Program
- Home visitor/visits
- Integrated Special Education Services
- Life Skills Program
- Phonemic Awareness
- Reading Recovery
- Special Education Centre
- Inclusive education
- Choir
- Clubs: Origami, Knitting
- Dance
- Before and After School Program
- Family Room
- Lunch Program

# Schools Schools Schools Schools Schools

---

## ROCKWOOD

452-4210

Ward One

Fax: 453-1970  
350 Rockwood Street  
Winnipeg, Manitoba R3M 3C5  
e-mail: rockwood@wsd1.org

**Principal** Curtis Belton  
**Superintendent** Robert Chartrand  
Parent Council

### Grades N-6

- English Program
- Basic French Language
- Alternative Program (Gr. 1-6)
- Enrichment Program
- Gifted and Talented
- Home Reading Program
- Learning Assistance Centre
- Outdoor Classroom
- Outdoor Education Program
- Reading Recovery
- Environmental Education
- Global Citizenship Education
- Choir
- Clubs: Video, Running, Sports
- Dance
- Drama
- Before, Noon and After School Program
- Daycare: YMCA/YWCA Kidspace
- Lunch Program

## SACRÉ-COEUR

775-2574

Ward Two



Fax: 783-0854  
809 Furby Street  
Winnipeg, Manitoba R3A 1T2  
e-mail: sacrecoeur@wsd1.org

**Principal** Lisa Calvez  
**Vice-Principal** Cristina Dias-Acquisto  
**Superintendent** Celia Caetano-Gomes  
Parent Council

### Grades N-8

- French Immersion Milieu
- French Nursery
- English-as-an-Additional Language Program
- Elementary/Jr. High Counselling
- Enrichment Program
- Lions-Quest
- Reading Recovery in French
- Choirs: Elementary and Intermediate
- Before and After School Program
- Lunch Program

# Schools Schools Schools Schools Schools

## ST. JOHN'S

589-4374

Ward Three



Fax: 582-5891  
401 Church Avenue  
Winnipeg, Manitoba R2W 1C4  
e-mail: stjohns@wsd1.org

**Principal** Linda Bulka  
**Vice-Principals** Cathy Sharrow  
Dennis Mogg  
**Superintendent** Dushant Persaud  
Parent Council

### Grades 7-12

Organized on a Middle Years (Gr. 7 & 8)  
and Senior Years (9-12) basis

- English Program
- Basic French Language
- Cree and Ojibwe Heritage Languages
- Advanced Placement
- Career Intern
- CHOICES Youth Program
- Co-op Work Experience
- Enrichment Program
- Gifted and Talented
- Integrated Special Education Services
- Learning Assistance Centre
- Life Skills Program
- Mentorship Program
- Outdoor Education Program
- Performing and Visual Arts
- School Resource Officer
- School to Work Transition
- Special Education Centre
- Band
- Choir
- Clubs: Chess, Reach for the Top
- Dance
- Improv
- Youth in Philanthropy
- Teen Clinic

## SARGENT PARK

775-8985

Ward Two



Fax: 786-5859  
2 Sargent Park Place  
Winnipeg, Manitoba R3E 0V8  
e-mail: sargentpark@wsd1.org

**Principal** Fatima Mota  
**Vice-Principals** Leslie MacGillivray  
Ken Romaniuk  
**Superintendent** Celia Caetano-Gomes  
Parent Council

### Grades N-9

- English Program
- Basic French Language
- English-as-an-Additional Language Program
- Elementary/Jr. High Counselling
- Enrichment Program
- Gifted and Talented
- Home Reading Program
- Integrated Special Education Services
- Later Literacy
- Performing and Visual Arts
- Phonemic Awareness
- School to Work Transition
- Practical Arts
- Band
- Choir
- Clubs: Aboriginal Perspectives, Arts & Crafts, Card Making
- Drama
- Lunch Program

# Schools Schools Schools Schools Schools

---

## SHAUGHNESSY PARK

586-8376

Ward Three



Fax: 586-6094  
1641 Manitoba Avenue  
Winnipeg, Manitoba R2X 0M3  
e-mail: shaughnessypk@wsd1.org

**Principal** Brenda Pundyk  
**Vice-Principal** Pat Lewicki  
**Superintendent** Dushant Persaud  
Parent Council

### Grades N-8

- English Program
- Basic French Language
- CHOICES Youth Program
- Integrated Special Education Services
- Learning Assistance Centre
- Clubs: Chess, Kidsfest, Video
- Dance
- Drama
- Aboriginal Scholarship/Aboriginal Cultural Studies (ACS)
- Primary, Intermediate, Junior High RIGHT Centres (FASD)
- WASAC (Winnipeg Aboriginal Sports Achievement Centre)
- Nutrition/Breakfast Program
- Lunch Program

## SISLER

589-8321

Ward Three

Fax: 586-0625  
1360 Redwood Avenue  
Winnipeg, Manitoba R2X 0Z1  
e-mail: sisler@wsd1.org

**Principal** George Heshka  
**Vice-Principals** Madalynne Iannone,  
Melody Woloschuk, Ken Reimer  
**Superintendent** Dushant Persaud  
Parent Council

### Grades 9-12 (Semester)

- English-French Immersion Dual Track
- American Sign Language Program
- Adaptive Skills Program
- Advanced Placement
- All Girls/All Boys Programs
- Career Intern
- English-as-an-Additional Language Program
- Integrated Special Education Services
- Life Skills Program
- Performing and Visual Arts
- School to Work Transition
- Senior Apprenticeship Program
- Special Education Centre
- Vocational Programs
- U of M Calculus
- U of W English
- Band
- Choir
- Dance
- Drama

# Schools Schools Schools Schools Schools

## SISTER MACNAMARA

942-6965

Ward Two



Fax: 989-2224

460 Sargent Avenue

Winnipeg, Manitoba R3B 1V5

e-mail: [sisternac@wsd1.org](mailto:sisternac@wsd1.org)

**Principal** Kimberly Midford  
**Vice-Principal** Signy Stewart  
**Superintendent** Karin Seiler  
Parent Council

### Grades N-6

- English Program
- Basic French Language
- English-as-an-Additional Language Program
- Elementary Counselling
- Enrichment Program
- Gifted and Talented
- Home Reading Program
- Integrated Special Education Services
- Outdoor Education Program
- Primary Language Centre
- School Resource Officer
- School Support Worker
- School to Work Transition
- Choir
- Clubs: Chess, Leadership, Pow Wow
- Dance
- Drama
- Child-Parent Mother Goose Program
- Daycare: Infant and Pre-School
- Family Room
- Lunch Program
- Boys and Girls Club

## STANLEY KNOWLES

694-0483

Ward Three



Fax: 694-7509

2424 King Edward Street

Winnipeg, Manitoba R2R 2R2

e-mail: [stanleyknowles@wsd1.org](mailto:stanleyknowles@wsd1.org)

**Principal** John Drzystek  
**Vice-Principals** Anne Pereira  
Andrea Redsky  
**Superintendent** Dushant Persaud  
Parent Council

### Grades N-8

- English-French Immersion Dual Track
- Basic French Language
- English-as-an-Additional Language Program
- Elementary/Jr. High Counselling
- Enrichment Program
- Integrated Special Education Services
- School to Work Transition
- Extracurricular Athletics
- Conflict Managers Program
- Practical Arts Facilities
- Band
- Choir
- Clubs: Media, Computer, Taiko Drumming
- Before, Noon and After School Program
- Child-Parent Mother Goose Program
- Daycare: Stanley Knowles Pre-School Centre Inc.
- Lunch Program

# Schools Schools Schools Schools Schools

---

## STRATHCONA

586-8493

Ward Three

Fax: 586-1161  
233 McKenzie Street  
Winnipeg, Manitoba R2W 4Z2  
e-mail: [yereniuk@wsd1.org](mailto:yereniuk@wsd1.org)

**Principal** Anastasia Sych-Yereniuk  
**Superintendent** Karin Seiler  
Parent Council  
Staff Advisory Council

### Grades N-6

- English Program
- Community Support Worker
- Dental Program
- English-as-an-Additional Language Program
- Gifted and Talented
- Home Reading Program
- Learning Assistance Centre
- Learning through the Arts Program
- Literacy Through the Arts Program (Integrated)
- Performing and Visual Arts
- Phonemic Awareness
- Reading Recovery
- School Resource Officer
- School to Work Transition
- Special Education Centre
- Choir
- Clubs: Technology, Dance, Art
- Dance
- Child-Parent Mother Goose Program
- Daycare: SPLASH
- Family Room
- Lunch Program

## TECHNICAL VOCATIONAL

786-1401

Ward Two



Fax: 774-8375  
1555 Wall Street  
Winnipeg, Manitoba R3E 2S2  
e-mail: [tecvoc@wsd1.org](mailto:tecvoc@wsd1.org)

**Principal** Gordon Crook  
**Vice-Principals** Edith Austin-Anderson  
Paul Krowiak  
**Superintendent** Celia Caetano-Gomes  
School Committee

### Grades 9-12

- English Program
- Advanced Placement
- Career Intern
- Dual Credit Program - (U or M, U of W)
- Dual Academic/Technical Diploma
- Integrated Special Education Services
- Learning Assistance Centre
- Mentorship Program
- Off-Campus Program
- Performing and Visual Arts
- School to Work Transition
- Senior Apprenticeship Program
- Vocational Programs
- Community Service
- Career Portfolio
- Tec Learning Centre
- Band
- Choir
- Clubs: Tec-Voc Speaks (Human Rights), GSA, Intramural Athletics
- Dance
- Drama
- Youth in Philanthropy
- Daycare: Child Care Program
- Teen Clinic

# Schools Schools Schools Schools Schools

---

## TYNDALL PARK

633-0065

Ward Three



Fax: 632-5953  
2221 King Edward Street  
Winnipeg, Manitoba R2R 1M5  
e-mail: tyndallpark@wsd1.org

**Principal** Darryl Stevenson  
**Vice-Principal** Susan Siinema  
**Superintendent** Dushant Persaud  
Parent Council

### Grades N-6

- English Program
- Basic French Language
- English-as-an-Additional Language Program
- Home Reading Program
- Home visitor/visits
- Integrated Special Education Services
- Primary Language Centre
- Reading Recovery
- TAP (Treatment and Academic Program)
- Conflict Managers Program
- Computer Lab
- Music, Primary and Intermediate Choirs
- Dance
- Drama
- Before, Noon and After School Program (Parent Run)
- Child-Parent Mother Goose Program
- Playschool
- Lunch Program (Parent Run)

## VICTORIA-ALBERT

943-3459

Ward Two

Fax: 957-7207  
110 Ellen Street  
Winnipeg, Manitoba R3A 1A1  
e-mail: nbollenbach@wsd1.org

**Principal** Aida Rodrigues  
**Vice-Principal** Kathleen Weir  
**Superintendent** Karin Seiler  
Parent Council

### Grades N-6

- English Program
- Basic French Language
- Community Support Worker
- English-as-an-Additional Language Program
- Gifted and Talented
- Integrated Special Education Services
- Learning Assistance Centre
- Music Program
- Wi Wabigooni–Alternative Program for Aboriginal Students
- Student Leaders
- Extracurricular Sports Program
- Breakfast Program
- Parent Room
- Lunch Program
- Day Care

# Schools Schools Schools Schools Schools

---

## WELLINGTON

774-8085

Ward Two

Fax: 772-2799  
690 Beverley Street  
Winnipeg, Manitoba R3E 2A5  
e-mail: wellington@wsd1.org  
website: www.wsd1.org/Wellington

**Principal** Angeline Ramkissoon  
**Vice-Principal** Evelyn Siddall  
**Superintendent** Karin Seiler  
Parent Council  
Community Revitalization Group

### Grades N-6

- English Program
- Community Support Worker
- English-as-an-Additional Language Program
- Enrichment Program
- Families and Schools Together (FAST)
- Home Reading Program
- Home visitor/visits
- Integrated Special Education Services
- Learning through the Arts Program
- Outdoor Classroom
- Phonemic Awareness
- Reading Recovery
- School to Work Transition
- Inner City Diagnostic Learning Centre
- Early School Years Program
- Nutrition Breakfast Program
- Choir
- Clubs: Running, Eco, Lego
- Child-Parent Mother Goose Program
- Family Room
- Lunch Program

## WESTON

775-2591

Ward Two

Fax: 775-6212  
1410 Logan Avenue  
Winnipeg, Manitoba R3E 1R9  
e-mail: weston@wsd1.org

**Principal** Gayle Alex  
**Superintendent** Celia Caetano-Gomes  
Parent Council

### Grades N-6

- English Program
- Basic French Language
- Community Support Worker
- Dental Program
- Enrichment Program
- Home Reading Program
- Integrated Special Education Services
- Learning Assistance Centre
- Lions-Quest
- Phonemic Awareness
- Reading Recovery
- Clubs: Computer, Art, Running
- Drama
- Family Room
- Lunch Program

# Schools Schools Schools Schools Schools

## **WILLIAM WHYTE**

**589-4313**

Ward Three



Fax: 586-0144  
200 Powers Street  
Winnipeg, Manitoba R2W 4P3  
e-mail: [wmwhyte@wsd1.org](mailto:wmwhyte@wsd1.org)

**Principal** Debbie Beach-Ducharme  
**Vice-Principal** Tim Cox  
**Superintendent** Karin Seiler  
Parent and Community Councils

### **Grades N-8**

- English Program
- Community Support Worker
- Early School Years Program
- Families and Schools Together (FAST)
- Home Reading Program
- Integrated Special Education Services
- Learning Assistance Centre
- School Resource Officer
- Learning Through the Arts Program
- Phonemic Awareness
- School to Work Initiative
- Inner City Soccer League
- Boys Drum Group/Girls Hand Drum Group
- Breakfast Program
- Clubs: Art, Video, Reading
- Dance: Hoop Dancing
- Community/Parent Room
- Lunch Program (Parent Operated)

## **WINNIPEG ADULT EDUCATION CENTRE**

**947-1674**

Ward Two

Fax: 956-5049  
Isbister School  
310 Vaughan Street  
Winnipeg, Manitoba R3B 2N8  
e-mail: [waec@wsd1.org](mailto:waec@wsd1.org)

**Principal** Gary Comack  
**Vice-Principals** Jill Tardiff  
Jeff Deitz  
Maureen Quinsey  
**Superintendent** Celia Caetano-Gomes

**Grades Basic 9-12 (Semester)**  
**Hours - 8:00 a.m. to 4:30 p.m.**

**Adolescent Parent Centre**  
Phone: 775-5440 Fax: 783-4365  
136 Cecil Street  
Maureen Quinsey, Vice-Principal

**Basic Education**  
Phone: 772-6541 Fax: 786-3401  
700 Elgin Avenue  
Jeff Deitz, Vice-Principal

**Adult EAL**  
Phone: 775-0416 Fax: 786-3401  
Jill Tardiff, Vice-Principal

**Adult Learning Centres**

- River Osborne Site  
101 Pembina Hwy.  
Phone: 477-0164 Fax: 477-0174

- Kaakiyow li moond likol  
510 King Street  
Phone: 582-9579

- continued on next page

# Schools Schools Schools Schools Schools

---

- WAEC *continued from previous page*

The Winnipeg Adult Education Centre provides an opportunity for adults to continue their high school education in an adult atmosphere.

The Centre offers a large variety of courses and options in all subject areas for students to complete their Grade 12. For those students not ready to enter at the Grade 12 level we offer preparatory courses at the Grade 9-11 levels to meet their needs.

English Language Development classes, leading to Grade 12 credit (English 40E), are provided at all levels. Entry level students need to at least have completed EAL courses and require an assessment to determine placement. Successful completion of English 40E is suitable preparation for a student to take English 40S Comprehensive.

Numerous opportunities exist for computer experience in Business Education, English, Science and Mathematics subjects.

The Basic Education program helps students attain functional literacy. This program provides development of basic skills in reading and mathematics for adults who are illiterate.

Students may take full, part-time, and/or combined programs depending on their individual needs and circumstances. Day classes are offered between 8:45 a.m. and 3:40 p.m. from Monday through Friday. The school has vending machines.

Applicants who are 19 years of age or older and have been out of school for at least 6 months are eligible for admission.

## **WOLSELEY**

**783-3237**

Ward Two



Fax: 775-6241

511 Clifton Street

Winnipeg, Manitoba R3G 2X3

e-mail: [wolseley@wsd1.org](mailto:wolseley@wsd1.org)

website: [www.wsd1.org/wolseley](http://www.wsd1.org/wolseley)

**Principal** Heather Boswick-Status  
**Superintendent** Celia Caetano-Gomes  
Parent Council

### **Grades N-6**

- English Program
- Alternative Program (Gr. 1-6)
- Basic French Language
- Adaptive Skills Program
- Integrated Special Education Services
- Reading Recovery
- Music
- Choir
- Sustainable Development Focus
- Student Leadership
- Before, Lunch & After School Program

# Departments

---

## **BUILDING DEPARTMENT** **786-0344**

Fax: 774-6406  
1395 Spruce Street  
Winnipeg, Manitoba R3E 2V8  
e-mail: BuildingDepartment@wsd1.org

**Director** George Heath

The Building Department's mission is to provide environmentally friendly, safe and secure facilities for students, staff and other community stakeholders for the Winnipeg School Division.

Under the general direction of the Chief Superintendent, the Building Department delivers infrastructure needs of the Division in consultation with senior administration, school administrators and community advisory groups.

The physical plant of the Division consists of 86 buildings with approximately 5,130,000 square feet of space of varying vintages and 300 acres of grounds.

The Building Department includes the following groups:

### 1) Engineering Group:

The Engineering Group provides the following professional services:

- Planning
- Architectural Design
- Mechanical Engineering Design
- Electrical Engineering Design
- Drafting
- Construction Management

### 2) Operations Group:

The Operations Group provides daily building maintenance, grounds maintenance and minor construction projects to the Division buildings

and grounds areas that include:

- Mechanical Maintenance
- Electrical Maintenance
- Interior Finishes
- Infrastructure Maintenance

*The custodial services are school based.*

### 3) Technical Support Group:

The Technical Support Group provides professional consulting service to both the Engineering and Operations Groups including:

- Project and Maintenance Estimation
- Planned and Preventative Maintenance Programs
- Energy Management Services

Building projects within the Division may be accommodated by internal and capital funds or by the Public School Finance Board. All projects are administrated under the general direction of the Board of Trustees.

## **HUMAN RESOURCES** **DEPARTMENT** **775-0231**

Fax: 786-6940  
1577 Wall Street East  
Winnipeg, Manitoba R3E 2S5

**Director** Eugene Gerbasi  
**Assistant Director** Christine Rhodes

The Human Resources Department is responsible for the development, implementation and maintenance of human resource programs for instructional and non-instructional staff including recruitment, staff transfers, employee records, negotiations, staff counselling, professional development for non-instructional staff, and interpretation and administration of employee collective agreements.

# Departments Departments Departments

---

The Human Resources Department also provides support and assistance to all other departments in addressing staff performance and behaviour concerns.

The Human Resources Department is responsible for assisting schools in the implementation of Workplace Safety and Health legislation. The Workplace Safety and Health Officer and the Wellness Coordinator are assigned to this department.

The Coordinator and Assistant Coordinator of Custodial Support Services are assigned to this department and provide technical support to the school principals to assist in the supervision of the custodial staff.

## RESEARCH, PLANNING AND SYSTEMS MANAGEMENT

1180 Notre Dame Avenue  
Administration Building No. 2  
Winnipeg, Manitoba R3E 0P2

The Research, Planning and Systems Management Department provides support and services to all students and staff in the Division related to the development of new and the monitoring of existing policies, research, planning, evaluations, library services, administrative procedures and the application of technology in the Division to support the administrative function.

**Director** Doug Edmond  
e-mail: dedmond@wsd1.org  
Phone: 789-0497 Fax: 775-1569  
**Clerical Assistant** Melissa Desrosiers  
Phone: 789-0474

### *Information Systems*

Fax: 775-4231

Information Systems provides services and support to all schools and administrative departments in the Division related to all administrative systems, student administration system, wide area network services and equipment, Internet, email, content filtering and security.

#### **Manager**

Marcia Martino mmartino@wsd1.org

Phone: 789-0426

#### **Clerical Assistant**

Sonya McWilliams  
smcwilliams@wsd1.org

#### **Systems Admin.**

Kevin Druet kdruet@wsd1.org

Phone: 789-0445

Arnel Jajalla

ajajalla@wsd1.org

Phone: 789-0425

Gautam Sharma

gsharma@wsd1.org

Phone: 789-0453

### *Research and Evaluation*

Fax: 775-1569

Research & Evaluation is responsible for the preparation and development of various division-wide surveys, projects and reports including enrolment projections, catchment area studies, school demographics, parent surveys and conducts assessments and analysis of various administrative and statistical data related to specific project/program evaluations and research studies.

#### **Research Officer**

Brent Guinn  
Phone: 789-0437 Email: bguinn@wsd1.org

#### **Research Analyst**

Kristine Vielfaure  
Phone: 789-0439 Email: kvielfaure@wsd1.org

#### **Clerical Assistant**

Rowena Barrion  
Phone: 789-0433 Email: rbarrion@wsd1.org



# Departments Departments Departments

---

## **SUPERINTENDENT'S DEPARTMENT 775-0231**

Fax: 772-6464  
1577 Wall Street East  
Winnipeg, Manitoba R3E 2S5

**Chief Superintendent** Pauline Clarke

**Superintendent of Schools - Central**  
Celia Caetano-Gomes

**Superintendent of Schools - Inner City**  
Karin Seiler

**Superintendent of Schools - North**  
Dushant Persaud

**Superintendent of Schools - South**  
Robert Chartrand

**Information Officer**  
Linda Wilson

The District Superintendents are responsible for the general direction and coordination of all matters relevant to the delivery of educational services within a designated group of schools (approximately 20 schools) including all aspects related to staffing, supervision and performance evaluations, budget development and allocation, and direction to principals on the delivery of programs and services in the schools. The District Superintendents are responsible for assessing the needs of each school in their district and assigning resources based on these identified needs and within the level of resources available. They are also responsible for establishing and maintaining effective communication with the parents/guardians and building strong positive relationships with the schools and the communities they serve.

The Communications section including the Information Officer is a component of the Superintendent's Department. The communications section provides assistance to the administration and the schools in the preparation of articles, fact sheets, bulletins, brochures, news releases and other documents on educational programs. The Information Officer initiates and coordinates information services related to the activities of the Board of Trustees, the schools and the senior administration. She is responsible for the coordination of all special events such as school openings, public presentations and news conferences. She assists in the development and distribution of communications about crisis situations and in the management of the media during these crises.

# Support Services

---

## **ABORIGINAL EDUCATION** 788-0203

Fax: 772-3911  
Prince Charles ERC  
1075 Wellington Avenue  
Winnipeg, Manitoba R3E 0J7

**Director** Val Georges  
vgeorges@wsd1.org

The Aboriginal Education department provides assistance to Division administration and school staff in the development and implementation of initiatives to support Aboriginal education throughout the Winnipeg School Division.

This includes: assessment of general system needs and specific needs of Aboriginal students and communities within the boundaries of the Winnipeg School Division, development of the Division plan for Aboriginal Academic Achievement, development of curriculum support materials, act as a liaison with outside groups, assist the human resources department with the recruitment of staff (particularly those from ethnic and cultural minorities) and coordinate professional development activities pertaining to Aboriginal education.

The Director also provides support to the EAL (English-as-an-Additional Language) program.

## **ASSESSMENT AND INSTRUCTIONAL SUPPORT SERVICES** 775-0231

Fax: 772-6464  
1577 Wall Street East  
Winnipeg, Manitoba R3E 2S5

**Director** Julie Smerchanski  
jsmerchanski@wsd1.org

The areas of responsibility are:

- Early Years
- English Language Arts
- Mathematics (N-Grade 8)
- Art
- Music
- Comprehensive Assessment Program
- Grades 3, 7 & 8 Provincial Assessment
- Division-wide Grade 8 Common Exams
- Provincial Grade 12 Standard Exams
- Division-wide report cards
- Early Numeracy, Middle Years Math Model
- Resource Programming

## **CHILD GUIDANCE CLINIC** 786-7841

Fax: 783-6068  
700 Elgin Avenue, 2nd Floor  
Winnipeg, Manitoba R3E 1B2

Web site:  
[www.wsd1.org/childguidance/cgchome.htm](http://www.wsd1.org/childguidance/cgchome.htm)

### **Area Service Directors and Units:**

Dale Guy - Central  
Fatima Ramjiawan - Inner City  
Doug Harrison - North  
Jane Friesen - South  
Kathy Gerylo  
Michelle Diawol-Strongman

# Support Services

---

The Child Guidance Clinic is a school-based support service that provides clinical services to students, parents and teachers in Winnipeg School Division.

The Clinic is operated by the Winnipeg School Division. It also provides services on a shared cost basis to some independent schools. The services of the Clinic are provided at no charge to children and their families.

***Clinic services are organized on a team basis which usually include:***

**Speech-Language Pathology:** helps students who have problems in language, speech, voice and fluency.

**Clinical Reading:** provides assistance to students who have reading and other learning difficulties.

**School Social Work:** works together with the school staff, the family home and the child when there is a need for closer ties between home and school; assists with social and emotional problems of students that interfere with school functioning.

**School Psychology:** assists classroom teachers and parents in diagnosing the academic and social/emotional needs of the child and implementing suitable interventions.

**Audiology:** provides support to students with hearing loss and auditory processing and assists teachers and parents in working with these students.

**Psychiatry:** assists with assessment, diagnosis and consultation. Psychiatry is provided at Child Guidance Clinic offices through Manitoba Adolescent Treatment Centre.

Another vital function of the Clinic is consulting with school personnel, program planning with school and community people and the provision

of inservices to both school staff and community groups.

Child Guidance Clinic clinicians work under the direction of an Area Service Director. They develop an understanding of the students needs in the geographic region in which they work and a knowledge of the resources available.

Schools have referral forms and referrals are discussed with school personnel and parents and channeled through a school support team. Services are provided on request and with the consent of the parent or guardian.

Clinicians can be contacted by telephoning the unit secretary or leaving a message at the school office.

## COMMUNITY LIAISON OFFICERS

The WSD provides supports to students and their families from different cultural and ethnic backgrounds through Community Liaison Officers.

### Chinese

Binh Hui Sister MacNamara  
bhui@wsd1.org

### Filipino

Perla Javate Daniel McIntyre  
pjavate@wsd1.org Grade 7-12  
Efren Villarba Tyndall Park  
evillarba@wsd1.org Grade N-6

### Portuguese

Eulalia Bairos Hugh John Macdonald  
ebairos@wsd1.org

### Spanish

Lucila Carrasco Technical Vocational  
lcarrasco@wsd1.org

### Vietnamese

Nam Vu Daniel McIntyre  
namdinhvu@live.ca

# Support Services

---

The Community Liaison Officers are knowledgeable in a variety of ethnic languages and cultures. They provide assistance to the ethnic students and parents in the Division and the schools which the students attend. Translation and interpreter services are available to assist with assessments, parent-teacher conferences and orientation of new immigrant families. For more information call Claire Nadeau at Prince Charles (788-0203, ext. 113).

Welcome Place acts as a liaison between schools and the community for refugees, refugee claimants and immigrants for whom English is not a first language. It provides support to families and students adapting to a new culture including providing interpretation services. Welcome Place provides support to schools in identifying and coping with cross-cultural issues. When making an initial referral or request for services, please call Carlos or Marta at 977-1000 and they will assign a Settlement Counsellor.

## **EDUCATIONAL TECHNOLOGY SUPPORT SERVICES 789-0461**

103-1180 Notre Dame Avenue  
Winnipeg, Manitoba R3E 0P2

**Director:** Jan Zamparutti  
Phone: 789-0463 Fax: 779-5633

**Consultants**  
Patrick Logan plogan@wsd1.org  
Phone: 789-0457 Fax: 779-5633  
MaryLouise Lisi mllisi@wsd1.org  
Phone: 789-0458 Fax: 779-5633

**Support Teacher**  
Leslie Gentes  
Phone: 789-0459

**E**ducational Technology Support Services provides support to all instructional staff in the Division related to the integration of technology for educational purposes and provides assistance to Division Instructional and Administrative staff in the development of initiatives and support in Educational Technology throughout the Division. This department has primary responsibility for the Department's Literacy with ICT initiative.

Services provided through the Director of Educational Technology Support Services include: Advanced Placement, International Baccalaureate, Gifted and Talented, Alternative Program, Dual Credit, Transition Program, Summer School and Mini-University Enrichment.

The following consultant areas report to the Director: Science, Phys. Ed., Math (secondary level).

## **PRINCE CHARLES EDUCATION RESOURCE CENTRE 788-0203**

Fax: 772-3911  
1075 Wellington Avenue  
Winnipeg, Manitoba R3E 0J7

**T**he Winnipeg School Division provides specialist teachers to support the instructional staff both in programs and professional development.

The professional support services personnel organize, coordinate and monitor Divisional programs; assess system needs related to programs within the specific area assigned and make recommendations to the superintendent's department; provide support to the principals and the

# Support Services

---

instructional staff for development and improvement of instructional programs; organize school-based inservice sessions; review educational materials and programs relevant to the specific area assigned; act as a liaison with outside groups including Manitoba Education, Citizenship and Youth; facilitate communication and articulation between schools; assist the human resource department in the screening and selection of instructional staff in their area of expertise.

## PROFESSIONAL SUPPORT SERVICES STAFF

### Aboriginal Academic Achievement

Nichola Batzel (South,Central) Support Teacher  
 Geraldine Whitford (Inner City, North) Support Teacher

### Aboriginal Education

Nichola Batzel (South,Central) Consultant  
 Geraldine Whitford (Inner City, North) Consultant  
 Nichola Batzel (.5) (North) Support Teacher  
 Marsha Missyabit (.5) (North) Support Teacher  
 Linda Marynuk (Central) Support teacher  
 Janice Millar (Inner-City) Support Teacher

### Art

Joe Halas Consultant

### Career Exploration Project Facilitator

Reesa Averbach

### Comprehensive Assessment Program

Rosanne Ashley Support Teacher

### CHOICES Youth Program

Murray Scott Program Coordinator  
 Wanda Tawkin Probation Officer  
 Gary Monkman Parent Program Facilitator  
 TBD Evening Program Facilitator

### Computer

Leslie Gentes (Division) Support Teacher  
 Keith Strachan (South) Support Teacher  
 Richard Sutcliffe (Central) Technician  
 Chris Conlin (South) Technician  
 Nanci Harrison (South) Technician  
 Keith Benson (North) Support Teacher  
 Richard Rider (Inner City) Technician  
 Matt Miller (Inner City) Technician

### Early Years

Penny Morka Consultant (N-4)

### EAL

Isle Slotin Consultant/Support Teacher

### French & Languages

John Erskine Consultant/Support Teacher

### Health Education

Nori Korsunsky Consultant

### Inner City

Melva Widdicombe Consultant

### Language Arts

James Gray Consultant (5-8)  
 Pat Opitz Consultant (9-12)  
 Kathy Kolybaba (acting) Consultant (9-12)

### Library Support Services

Kevin Mowat Consultant

### Mathematics

Meagan Mutchmor Consultant (K-8)  
 Christine Ottawa Consultant (9-12)  
 Faria Sheikh Support Teacher, Middle Years  
 Colleen Heuchert Support Teacher, Middle Years  
 Neil Dempsey Support Teacher, Middle Years  
 Colleen Foster Support Teacher, Middle Years  
 Glenys MacLeod (Central) Support Teacher, Middle Years  
 Catherine Kaye Support Teacher, 9-12  
 Maria Santos (North) Support Teacher  
 Matt Couture (South) (.5) Support Teacher

# Support Services

---

## **Mentorship Program**

Sharon Goertzen                      Program Coordinator

## **Music**

Trish Penner                              Consultant

## **Nurse Educator**

Kerry Heather

## **Physical Education**

David Bard                                 Consultant

## **Pupil Services**

Olga Wyshnowsky                      Consultant

## **Science**

Mary Lucy Rocha St. Lawrence      Consultant

## **Social Studies**

Pat Harrison                                Consultant

## **Special Education**

Donald Teel                                 Service Director

Drucie Hogle                                Consultant

Barbara Ivans                               Consultant

## **STUDENT SUPPORT SERVICES**

**788-0203**

Fax: 772-3911

1075 Wellington Avenue  
Winnipeg, Manitoba R3E 0J7

## **Director**

Julie Millar

**S**tudent Support Services provides support to classrooms and teachers through the development of multilevel teaching strategies and classroom management strategies. The emphasis of service is prevention and on supporting students in inclusive settings, particularly in the early years. The Director of Student Support Services also facilitates placement in Special Education programs.

Services provided through the Director of Student Support Services include the Housing Registry, Health Programs, Guidance and Counselling, Volunteer Program, University Summer Institutes, Partnerships, Career Development Programs, Community Transition Program, Special Education, Parent Education, Developing Safe Schools Initiative, Human Rights Initiative, Violence Prevention, School Therapy Services and the CHOICES Youth Program.

**Special Education                      700 Elgin  
774-4525**

Fax: 775-6245

Winnipeg, Manitoba R3E 1B2

## **Service Director**

Donald Teel

The Service Director, Special Education is supported by two consultants and is responsible for the organization and coordination of special education programs.

Principals have the prime responsibility for the programs in their respective schools. The role of the Service Director is to ensure that the needs of children requiring special education programs are met either in the existing special education program or by the development of new ones.

For division-wide special education programs, the Special Education Department performs a coordinating function: establishing eligibility of students for special education services, monitoring placement and supports, arranging transportation for children entering special education programs, assisting teachers, principals, and support staff in programming and identifying special education program needs within the Division.

# Support Services

## DAY CARE CENTRES

The Winnipeg School Division provides space in schools for day care centres where surplus space is available. The Department of Community Services determines the day care needs. In some instances the school division enters into a lease agreement with the day care centre.

Please check the school listings in this document for Day Cares.

### *Before School, Noon & After School (BNAS)*

The Winnipeg School Division recognizes the need for school-age day care (Before School, Noon and After School) and the need for parent or community group supervised lunch programs at the elementary level. The Division supports parents and community groups in establishing supervised lunch programs. The Division has made vacant space available to non-profit parent or community groups interested in establishing a before school, noon and after school program or a pre-school program which are both government funded.

Please check the school listings in this document for (BNAS).

## VOLUNTEERS

### Coordinator

**Carmen Court** (Earl Grey School)

340 Cockburn Street North

Winnipeg, Manitoba R3M 2P5

Phone: 474-1513

Fax: 453-4054

### Assistant Coordinator

**Erin Bailey** (Ashland)

170 Ashland Ave.

Winnipeg, Manitoba R3L 1L1

Phone: 453-1748

Fax: 453-0739

Volunteer Services Coordinators are available to assist schools in coordinating their volunteer program. The Coordinators can provide support in the following areas:

- a) structure & organization of school volunteer programs
- b) recruitment and screening of volunteers
- c) orientation and training
- d) recognition

### Parent Resource Coordinator:

**Karen Naumiuk** (Earl Grey School)

340 Cockburn Street North

Winnipeg, Manitoba R3M 2P5

Phone: 474-1513

Fax: 453-4054

The Parent Resource Coordinator can provide support in the following areas:

- a) provide an on-going support to parent rooms and programs;
- b) provide support in establishment of parent resource programs;
- c) identify appropriate resources related to parent outreach and education;
- d) develop and update a parent resource package for schools;
- e) support families by providing information on housing.

For further information contact any of the Coordinators at their location.

## HOUSING REGISTRY

Students who change schools frequently experience difficulties in adjusting to new routines and new people, and their learning may be affected.

The Housing Registry is a program which has been established in order to address the problem of migrancy of children and their families. Parents are encouraged to locate appropriate housing within the community, making it possible for their

## Support Services

---

children to continue their studies without interruption, and avoid the disruption of changing schools in mid-year. Support and assistance are provided to families in locating suitable housing and/or resolving their housing problems.

For more information on this program contact Karen Naumiuk, the Parent Resource Coordinator through the Volunteer Services at 474-1513.

# Programs

---

## ADOLESCENT PARENT CENTRE

The Adolescent Parent Centre, located at 136 Cecil Street, is a program of the Winnipeg Adult Education Centre. This school provides academic courses for parenting and pregnant women through junior and senior high years. Individualized instruction and continuous intake allow students to continue their schooling while they are pregnant. Students can remain at the centre until their child reaches two years of age or they reach 21. Senior high students obtain graduate standing or credits towards graduation following Manitoba Education curricula.

In addition, parenting and nutrition courses complement a supportive environment for both mother and child. Social work through Child Guidance Clinic and liaison with Child and Family Services assist students on a daily basis, while counselling through the City of Winnipeg assists students on matters of social assistance and budgeting, on occasion, throughout the year. An outreach clinic from Women's Hospital operates weekly for obstetric care.

Infant labs, which are maintained collaboratively between professional staff and students, provide a supervised and educative environment for mother and child.

Any teenager who is pregnant or who already has a child may register. For further information contact 775-5440 or 947-1674.

## ADULT ENGLISH AS AN ADDITIONAL LANGUAGE (EAL)

The Winnipeg School Division operates an Adult EAL (English-as-an-Additional Language) program on behalf of the provincial government to provide an opportunity, within a multicultural environment, for adult students to develop a facility in the English language and an understanding of Canadian society.

Classes are available during the day at 700 Elgin Ave.; Elmwood High School; 686 Portage Ave., 2nd floor; 1021/1025 McPhillips St. and Sir William Osler, as well as in the evening at Winnipeg Adult Education Centre.

For more information contact: Adult EAL Centre, 700 Elgin Avenue, Winnipeg R3E 1B2. Phone 775-0416.

## ADVANCED PLACEMENT PROGRAM

The Advanced Placement (AP®) Program is a cooperative educational endeavor between secondary schools and colleges and universities. For students who are willing and able to apply themselves to college-level studies, the Program enriches their secondary and post-secondary school experiences. It also provides the means for colleges to grant credit, placement, or both to students who have applied themselves successfully.

Any student new to the AP program is on probation until teachers determine the suitability of the program for that student.

AP courses are offered at Gordon Bell, Grant Park, St. John's, Sisler, Daniel McIntyre, Elmwood, Tec Voc and Collège Churchill.

## ALTERNATIVE BEHAVIOUR SERVICES

Alternative Behaviour Services are available for students in a regular school program who exhibit inappropriate behaviour or social skills as the primary concern. These students require a behaviour management plan and benefit from short-term intervention and/or assessment. Behaviour management strategies are developed for classroom implementation.

# Programs Programs Programs Programs

## ALTERNATIVE EDUCATION

### *Elementary:*

The Alternative Education program features multi-aged groupings, student-centered, activity-based thematic learning and a high level of parental involvement. Alternative programs are available to elementary students in Grades 1 to 6 in the Division.

The Alternative Education Program is open to all students who are eligible for regular education in the Division.

Children who are accepted into this program should show evidence of self-motivation; be socially/emotionally well-adjusted and demonstrate an ability to work independently in an activity-based, multi-level class.

Each classroom has a grade span of two or three years. The subjects studied are in accordance with Manitoba Education curriculum guidelines.

Parental involvement is an integral part of the program.

The following schools offer the program: Laura Secord, Luxton, Rockwood, Wolseley, Earl Grey, Lord Selkirk and Isaac Brock. Other schools in the Division may have structured similar programs to serve their population.

### *Flexible Learning Program:*

The Flexible Learning program is the junior high level extension of the Elementary Alternative Education program and is available at Churchill, Elmwood, Gordon Bell, and Grant Park.

## COMPREHENSIVE ASSESSMENT

The Comprehensive Assessment Program (CAP) replaced the Early Identification Program (EIP) which operated in the Division from September, 1976 to June, 2000.

CAP provides a screening process to assess each student's strengths and weaknesses upon school entry and throughout the elementary

years. It enables school personnel to understand each child's needs and to develop an appropriate educational program.

Each school has a review team comprised of the early childhood teacher, the public health nurse, the resource teacher, administrator and Child Guidance clinicians who review the results and identify children requiring intervention. Each teacher closely observes social/emotional growth, speech and language development, creativity, literacy and numeracy awareness, thinking skills and motor development.

All children are given a basic motor screening assessment. Nursery to Grade 6 teachers administer the CAP early in the fall term.

## DIAGNOSTIC LEARNING CENTRE

The D.L.C. is a program for students in the Winnipeg School Division. This program provides nine weeks of in-depth diagnostic intervention and the development of teaching and learning strategies primarily related to Language Arts. These strategies can then be applied in the classroom setting for individual students in both English and French Immersion/Milieu programs. The target group of students is in Grades 2 to 6.

The program is available to any student who is referred by the home school and who meets the admission criteria.

*There are three sites for the DLC:*

### **Ashland School**

170 Ashland Avenue  
Winnipeg, MB R3L 1L1

Phone: 453-5740

Fax: 453-0739

### **Lord Selkirk School**

170 Poplar Avenue  
Winnipeg, MB R2L 2B6

Phone: 667-8495

Fax: 667-0753

### **Wellington School**

690 Beverley Street  
Winnipeg, MB R3E 2A5

Phone: 774-8085

Fax: 772-2799

# Programs Programs Programs Programs

---

During the year there are **four** Learning Centre sessions of nine weeks each. Students attend either a morning or an afternoon session at one of the three sites. The other half-day the students are in their regular classrooms.

Transportation by taxi or school bus is provided for students who attend the Diagnostic Learning Centres.

For further information, please call the Diagnostic Learning Centre (Ashland/Lord Selkirk sites) at 453-5740 or the Inner City D.L.C. at Wellington 774-8085.

## EAGLES' CIRCLE

The Eagles' Circle is an off-campus program of Hugh John Macdonald School. The program, located at Rossbrook House, 658 Ross Avenue, serves a maximum of 25 Aboriginal students who are academically able, but who have lower skills due to non-attendance.

The program offers individual programming in reading, writing and small classes in geography, science, Native studies, crafts and health.

## EARLY SCHOOL YEARS

The Early School Years Program is offered in six Inner City schools (Fort Rouge, Mulvey, William Whyte, Pinkham, Dufferin, and Niji Mahkwa) to provide an enriched educational environment for children in nursery and kindergarten. The primary focus is on language development and supporting parents in their involvement in the educational process of their children.

## ELEMENTARY COUNSELLING

A number of schools in the Division have implemented an elementary counselling program. Elementary school counsellors are involved in four general kinds of counselling situations: developmental, preventative, facilitative

and crisis counselling.

The counsellors work collaboratively with parents, school staff and community resource personnel in the sharing of information and expertise for identifying and responding to students in need of special help or services, and provides direction and support to special interest programs and services as this relates to the needs of the student population.

## ENGLISH-AS-AN-ADDITIONAL LANGUAGE (EAL)

The Winnipeg School Division provides programs for non-English speaking students to gain sufficient English language skills to enter the educational mainstream.

The EAL program has two major goals. The first is to provide formal and informal language learning experiences which will quickly enable the student to develop language skills, and the second is to provide a positive image for the student's native language and culture.

Five EAL Centres have been established to support students from war affected countries.

## FAMILY LIFE

Family life education programs are offered in schools in the Division. Parents have the opportunity to examine the materials to be used in the program.

Parents are given the opportunity to withdraw their child from the program.

## GIFTED AND TALENTED

The Division is committed to an educational philosophy that recognizes the unique needs of gifted and talented students. Differentiated programming is provided through the regular classroom with the assistance of such supports

# Programs Programs Programs Programs

---

as non-classroom personnel, community resources and professional development.

Schools use a variety of assessment strategies to determine the performance potential of all students. Both formal and informal methods are used to gather data on intellectual ability as well as behavioural traits such as task commitment and creativity.

## INFANT DEVELOPMENT

The Winnipeg School Division through several innovative, imaginative projects demonstrated that it is possible for the adolescent and the infant to attend school together, allowing the parent to gain high school credits and to learn to parent the child.

The Infant Development Program allows adolescent parents to bring their infants (ages of 2 months - 2 years) to school. It is expected that the adolescent parent will provide most of the one-to-one care with her child while the infant is in attendance. The adolescent parent must always be “on site” and easily accessible to be involved in the care of her infant at school.

Adolescent parents must maintain at least 60% to 65% attendance at school in order to continue to utilize the child care facilities, receive course credit and be enrolled as a full-time student.

The long range program objective is to provide adolescent parents with an opportunity to gain the knowledge and skills to enable them to become productive, contributing members of the work force and society.

Infant Development Labs are located at the following locations in the Division: Adolescent Parent Centre, Argyle, Children of the Earth, Elmwood, Gordon Bell and Tec Voc.

## INTERDIVISIONAL STUDENT SERVICES

In 1974, the Winnipeg School Division entered into an agreement with Department of Education to assume the responsibility for the administration, program supervision, and operation of a variety of support programs for students who are clients/patients of various facilities. Students from across the province are possible candidates for the programs funded by the province.

Under the terms of the arrangement, the provincial government provides funding to cover the total cost of salaries, supplies, administration, professional development and any substitute teachers that may be required.

Interdivisional Student Services are under the jurisdiction of the Superintendent’s Department (Superintendent of Schools - Central) at the Division level, and the Student Services Branch, Manitoba Education, Citizenship and Youth at the provincial level.

### PROGRAMS FUNDED BY THE DEPARTMENT OF EDUCATION:

**1. Educational Services for Medical In-patients at Health Sciences Centre**—a classroom setting at Children’s Hospital and tutoring on the wards provide an educational program for hospitalized students in Grades 1 to 12. In-patients at Children’s Hospital or elsewhere in the Health Sciences Centre complex who expect to be hospitalized for at least one week are eligible for the school program.

**2. Child & Adolescent Psychiatry**—PsychHealth Centre, Health Sciences Centre.

*a) In-patients*—Classrooms on the ward serve in-patients who anticipate a lengthy hospitalization. Usual admission as an in-patient is through

# Programs Programs Programs Programs

---

emergency. Currently two half-day classrooms are operated with a maximum of seven students per class. This program operates collaboratively with the home school of each of the patients.

*b) Eating Disorders Program*—Adolescent patients diagnosed with an eating disorder attend both an educational and treatment setting at the PsychHealth Centre. A classroom serves 8-12 patients for educational programming 3-5 hours a day with the remainder of their day in a treatment setting. The classroom teacher works collaboratively with each of the patient's home schools. All referrals to this program are through the Winnipeg Regional Health Authority.

*c) Autism Program*—School Age Assessment and Consultation - An assessment of students with autism is done by observation at the home school as well as in the more clinical setting at 228 Maryland (Manitoba Adolescent Treatment Centre). Recommendations for programming are provided to the home school. Referral for services is through Centralized Intake 958-9660.

**3. Villa Rosa**—Pregnant students who are residents at Villa Rosa, young mothers who reside in the post-natal house next door, and day students who are in transition back to their communities are eligible for the school program. Referral for agency involvement is through Winnipeg Child and Family Services.

**4. Montcalm School Program**—Operates under the jurisdiction of the Winnipeg School Division. It provides individualized education programming for adolescents with severe psychiatric and emotional diagnoses while they are in treatment at the Manitoba Adolescent Treatment Centre. Address: 120 Tecumseh St. Phone: 477-6391; Fax: 783-8948. Referral for services is through Centralized Intake at 958-9660.

## **5. Youth Justice Educational Intake Team**

This team of teachers services adolescent students who are residents of the Manitoba or Agassiz Youth Centers. The team will assess the students' learning needs and identify appropriate educational interventions to assist the youth to improve their overall learning skills and school performance, both at the centres and in their home school.

## **6. Women's Shelter Educational Services**

Educational programming, by a classroom teacher, is provided to all elementary school age students who are residing at the women's shelter. The educational program is delivered on site, incorporating a "One Room School House" model.

## **PROGRAMS FUNDED BY THE WINNIPEG SCHOOL DIVISION:**

**Tutoring Services**—The Division provides tutoring services for students who are homebound due to lengthy illness. Referrals are made by the home school and forwarded to the Interdivisional Student Services office located at Prince Charles Education Resource Centre.

Although tutoring services are not intended to be used as an alternative program to a school placement, at times the services are provided for students with behavioural problems. These students are tutored on a temporary basis. Referrals from the home school are sent to the appropriate Superintendent of Schools for approval.

Tutoring Services are fully funded by Winnipeg School Division and serves only students within Division boundaries.

# Programs Programs Programs Programs

---

## INTERNATIONAL BACCALAUREATE (IB)

The IB program, available to students throughout the Division who have met the requirements for the program, is offered at Kelvin High School.

The program offers a challenging, comprehensive and highly academic curriculum for the academically talented student. The same course of studies is followed by students around the world. High standards are maintained by means of external examinations set in Geneva, Switzerland. The IB program is followed for three years (10-12).

## LANGUAGE PROGRAMS

The Winnipeg School Division provides the opportunity for language programs provided that:

1. the language program has a curriculum approved by Manitoba Education;
2. the enrollment in the first year of the program is 23 at the elementary level, 20 at the Grade 7 level and 18 at the Grade 10 level.

When a program is accepted as a school offering, the language sequences in elementary, junior or senior high will be provided as long as enrollment numbers are reasonable.

Busing is provided for K-4 students in the language and alternative programs subject to the distance requirement of 1.6 kilometres. Nursery students attending one of the Division's three French immersion milieu schools are also bused subject to distance requirements.

*Currently the Division offers the following language programs:*

### FRENCH LANGUAGE

#### *Primary French*

Offered in a number of elementary schools depending on the availability of qualified staff and expressed parent interest. The program begins in either kindergarten or Grade 1 and leads into the Basic French program at the Grade 4 level. The goal of the program is to have students gain an appreciation of learning French, gain basic vocabulary and master simple phrases.

The Primary French program is offered in the following schools: Earl Grey, Gladstone, Grosvenor, Harrow, Lord Roberts, Meadows West, Mulvey, River Elm, Rockwood, Sister MacNamara, Victoria-Albert, Glenelm, J.B. Mitchell, Kent Road, Montrose, Queenston, Riverview, Robert H. Smith, and Robertson.

#### *Basic French*

Optional program, beginning at Grade 4, also optional at the secondary level.

#### *French Immersion*

The method used for teaching is one where all communication in the classroom between teachers and students occurs in French, with the exception of English language arts.

*Early French Immersion:* Begins in nursery (LaVérendrye, Lansdowne and Sacré-Coeur), kindergarten or Grade 1. Kindergarten is 100% French instruction and approximately 75% of Grade 1-6 students' time is spent studying the regular curriculum in the French language. Beginning in Grade 1, English language arts is taught for approximately one hour per day in English.

*Late Entry Immersion:* Begins in Grade 7 at River Heights. Students in this program receive a minimum of 60% of their instruction in the French language.

# Programs Programs Programs Programs

---

## ***Immersion Programs***

Students have a choice of immersion “milieu” or immersion dual track schools. The milieu schools are where the French immersion program is the only program taught in the school. The dual track school is one where the regular English program is also taught.

The immersion program option is offered in the following elementary and secondary immersion schools:

### ***Elementary***

**Dual Track**—Garden Grove, George V, J.B. Mitchell, Laura Secord, Riverview, Robert H. Smith and Stanley Knowles. (K-6)

**Milieu**—Lansdowne, LaVérendrye and Sacré-Coeur. (N-6)

### ***Junior High/Secondary***

**Dual Track**—Kelvin, River Heights, Sisler and Stanley Knowles.

**Milieu**—Lansdowne, Sacré-Coeur and Collège Churchill.

## **ENGLISH-UKRAINIAN BILINGUAL**

Offered at Ralph Brown School (K-8); 50% of instruction is in English and 50% in Ukrainian.

## **ENGLISH-HEBREW BILINGUAL**

Offered at Brock Corydon School (K-6); 50% of instruction is in English and 50% in Hebrew.

## **HERITAGE AND ANCESTRAL LANGUAGES**

The Division offers the following languages at the schools listed.

**Cree**—Children of the Earth, Niji Mahkwa

**Filipino**—Tyndall Park, Daniel McIntyre

**Japanese**—Kelvin

**Ojibwe**—Children of the Earth, Niji Mahkwa

**Portuguese**—Daniel McIntyre

**Spanish**—River Heights, Kelvin, Collège Churchill

**Ukrainian**—Robertson, Sisler

## **LITERACY WITH INFORMATION AND COMMUNICATION TECHNOLOGY (LWICT) ACROSS THE CURRICULUM**

The Winnipeg School Division is implementing LwICT Across the Curriculum for K-8 students. LwICT provides students with opportunities to develop their critical and creative thinking within the core curricular areas through responsible and ethical use of Information and Communication Technology (ICT). Schools will report once per school year on student use of ICT.

## **MULTICULTURALISM**

The Division recognizes the cultural diversity of the City of Winnipeg and its cultural heritages, and the concept of multiculturalism concerning the children and adults in schools. The Division has encouraged multicultural enrichment programs, assisted immigrant children to acquire either one or both of Canada’s official languages, and has maintained liaison with the various ethno-cultural communities in Winnipeg. The Division employs community liaison officers, cross cultural support workers and teacher assistants who are knowledgeable in a variety of ethnic languages and cultures. They provide assistance to the ethnic students and parents in the Division and the schools which the students attend. Translation services are available if required.

# Programs Programs Programs Programs

---

## **NUTRITION**

The nutrition program has been in place in the Winnipeg School Division since 1975 with the cooperation and financial assistance of the provincial government. The program was instituted in response to a need identified by schools that many inner city students were coming to school without adequate nourishment, which was believed to be associated with a decreased potential to learn, high absenteeism, frequent illnesses, reduced attention span and classroom behaviour problems.

There are currently 41 schools participating in the nutrition program.

In 2007, the Division passed Policy IGAEA Nutrition, which is based on the Manitoba School Nutrition Handbook: Getting Started with Guidelines and Policies.

## **PERSONAL SAFETY**

The Division implements the Kids in the Know program for students in Grades N-8. The program aims to reduce victimization by teaching children effective personal safety strategies.

## **READING RECOVERY PROGRAM**

The Reading Recovery™ Program is an effective early intervention program designed to reduce dramatically the number of children with literacy difficulties in schools. It is a second chance prevention program delivered to the lowest achieving students in Grade 1. These at-risk children have, in addition to classroom instruction, daily individual teaching which brings them to average levels of achievement for their classes in a short time. Reading Recovery is designed for children who are the lowest readers in the ordinary classroom without exception.

The Reading Recovery Program is currently offered in 40 WSD schools.

For more information call the Reading Recovery teacher leaders at 489-4689, Fax: 487-4985.

## **RISING SUN**

This is a satellite alternative program run by Gordon Bell High School to provide academic programs based on the needs of Aboriginal students.

## **SCHOOL THERAPY SERVICES**

The purpose of School Therapy Services is to provide physiotherapy and occupational therapy support services in the school setting for students with multiple/physical disabilities. The goal is to enhance the learning potential for the handicapped student and to facilitate his/her adaptation to the education environment.

Students eligible for physiotherapy/occupational therapy services are those who are multi-handicapped, or physically disabled between the ages of five to 21 years.

Referral forms may be completed by teachers, physicians, public health nurses, or other health/education professionals. Written parental consent is obtained by School Therapy Services and must be received before assessment or treatment can be initiated.

## **SCHOOL TO WORK TRANSITION**

School to work transition is work undertaken in the community by a student while attending high school. It is an exploratory experience designed to provide students with a knowledge of various jobs and their demands.

The program enables the school to keep informed of developments in the business and industrial community and encourages the student to remain in school.

# Programs Programs Programs Programs

---

The goal of the School to Work Transition initiative is to prepare students to transition from secondary school to work or further studies.

The program ensures that students develop the foundation skills, attitudes, behaviours and knowledge that are essential for life, learning and work.

Initiatives include: career days, classroom instruction, portfolio development, apprenticeships, job shadowing, work experience, career counselling and a career symposium.

To participate in the program or to obtain further information contact the Pupil Services Consultant, Olga Wyshnowsky at 788-0203.

## SPECIAL EDUCATION

The Division offers a number of special education programs for students living in the Division. Access to these programs is through an established referral system. For information contact the school in your area or the Special Education Dept. at 774-4525.

The special education model is designed to be as non-categorical as is possible. It provides for a variety of student placements ranging from accommodation in regular programs, to very specialized settings, according to the unique learning needs of each individual child.

Essentially there are only two types of placements within the Division for students with special education needs:

1. *Integrated Special Education Services*—designed to meet the special educational needs of students in their neighbourhood school.

2. *Special Education Centres*—designed to meet the special educational needs of children in low enrollment classrooms.

Students with various disabilities have access to the continuum of specific program placement options.

## THE FOLLOWING IS THE SERVICE DELIVERY MODEL FOR SPECIAL EDUCATION SUPPORTS:

a) **Special Education Supports at Home School**—Home programming serves students with exceptional needs who are integrated in programs within their home school and who have less intensive needs but may require program modifications, supplementary instructional services, special materials, equipment and/or physical facilities, and/or access to trained specialists in education and therapy.

b) **Special Education Centre within Division**—Division-wide programming provides for the allocation of more intensive special education supports. Special Education Centres are established across the Division to meet the needs of students for whom the intensity of service required cannot be provided in their home school. This may occur when individual schools do not have sufficient numbers of students to support a program for students requiring low ratio settings, or when more intensive supports are required. Referral to a low ratio support setting is based on the severity of handicap and the intensity of programming required. Programming provides for integration where possible and appropriate.

Division programming also meets the needs of students requiring the most intensive special education supports and / or resources including: modified physical facilities, specialized program adaptations and intensive clinical services.

c) **Community Programs**—Referral to community-wide programs occurs when a student is unable to function in a regular school setting with supports. Community programs include: referral to a special residential facility (Marymount, Knowles, Interdivisional Program for Students with Autism, etc.), homebound instruction, or hospital instruction.

# Programs Programs Programs Programs

---

## **Programs for Students with Cognitive Disabilities**

Students with significant cognitive disabilities are accommodated in integrated settings, special education centres, or Life Skills classrooms.

## **Programs for Children with Learning Disabilities**

Students with severe learning disabilities are generally accommodated in integrated special education programs and special education centres. These supports serve seriously under-achieving students generally of at least average intellectual potential who have learning disabilities related to problems in: the perceptual motor areas; the receptive/expressive language areas; and or exhibit difficulty assimilating, organizing, generalizing new information; difficulty focusing attention; weaknesses in conceptual background; a negative self-image as a learner. There are designated programs for students with language disorders who require more intensive programming. These include:

- The Program for Children with Language Disorders and Related Learning Disabilities—designed to provide a continuum of programming for students with average intellectual potential who have a learning disorder characterized by an impairment of severe delay in using language—either in processing other people’s messages and/or in producing their own;
- Early Childhood Language Centre Program —designed to provide an intensive educational and therapeutic program for five and six year old children who are severely language delayed or disordered, or developmentally delayed with language needs.

## **Learning Assistance Centre (LAC)**

The Learning Assistance Centre is a Special Education program for students aged 6-16 who exhibit behaviours characteristic of very severe emotional disturbance and/or behaviour disorder.

The program is located in various schools in the Division and provides a low-enrollment setting, an intensive staff-student ratio and a resource-treatment component.

The home school remains actively involved by participating in the placement, planning and re-integration processes.

The primary purpose of the LAC program is to improve the student’s social functioning.

## **Programs for Deaf and Hard of Hearing Students**

An itinerant teacher of the deaf and hard of hearing supports students in regular classes who have a permanent, bilateral loss of at least a moderate degree. Services are divided into three main areas: direct service to student; consultation to classroom teacher and other school staff; and collaboration with Child Guidance Clinic clinicians and audiologists.

Four schools host programs for the Deaf and Hard of Hearing (Grosvenor, J.B. Mitchell, Kelvin and River Heights). They are designed for hard of hearing students who require more intensive support services than can be provided in their home schools.

## **Programs for Students with Physical Disabilities**

- Students with physical disabilities frequently attend their home school if they have the support services and physical facilities to effectively address their needs. If this is not available, students attend schools at the elementary or secondary level that are appropriately designed,

# Programs Programs Programs Programs

---

specially equipped and staffed to meet the range of needs that students with physical disabilities may have.

The Adaptive Skills Program is for students with multiple handicaps, including significant cognitive disabilities, orthopedic disabilities or sensory impairments.

## Other special education programs

- include Programs for Children with Autism and Related Disorders; Programs for Students with Severe Vision Impairments; Community Transition Program (passage from school life to community life); Adaptive Aquatics (adaptive swimming lessons) and Adaptive Physical Education.

## SONGIDE'EWIN ALTERNATIVE PROGRAM

**S**ongide'ewin, an off campus program of Niji Mahkwa School, is located at 484 Selkirk Avenue. The program operates under the supervision of the Principal and Vice-Principal of Niji Mahkwa School.

The Songide'ewin Alternative Program serves Grades 9 to 12 Aboriginal students who have attendance difficulties and whose educational needs are not able to be met in a regular program.

The program provides individualized programming and instruction for students based on their educational/social needs and abilities. There is cultural and linguistic opportunities made available for students. The Cultural Team and Songide'ewin make arrangements for teachings, ceremonies and experiences.

Winnipeg School Division has assumed funding responsibilities for Songide'ewin and there are funding partnerships with community organizations for special components of the program such as bus tickets and nutrition.

## S.T.A.R.S.

(Strategies • Techniques • Attitude • Responsibility • Success)

**T**he S.T.A.R.S. Program, located at Lord Roberts School, is a six week half-day program designed for Grades 1-6 students with behavioural difficulties who may benefit from short-term intensive intervention.

The program includes four parental evenings where parents receive training in programs offered to students.

The program aims to provide assessment and development of strategies related to behaviour management. These include social skills training, coping skills, and strategies for implementation at the home school by the home school team and the S.T.A.R.S. teacher.

The S.T.A.R.S. program will have on-going communication with each student's parents/guardians, home school, and home-school teacher.

A behaviour plan will be developed for each student in conjunction with social skills training, coping skills and strategies for implementation at their home school.

The S.T.A.R.S. Program uses a variety of materials to teach social skills and build the student's self-esteem.

The three main areas worked on are empathy (feeling), impulse control (problem solving) and anger management.

## STUDENT BURSARY

**W**innipeg School Division offers bursaries each year that may be awarded to resident students who are attending Winnipeg schools and who plan to continue to attend Winnipeg schools. They may be awarded at the end of Grade 9, 10 or 11 to students whose standing is satisfactory and who require assistance to enable them to continue their high school education.

The value of each bursary is determined by the Superintendent's Department of the Division.

# Programs Programs Programs Programs

---

The School Board bursaries are tenable in any Winnipeg high school with the exception of Technical-Vocational High School and R.B. Russell Vocational School. Tec Voc and R.B. Russell students or students in business education courses in other high schools may apply for Margaret Crawford Bursaries.

## SUMMER SESSION

Winnipeg School Division offers three options in the academic Summer Session Program:

1. Senior High non-repeater and repeater credit courses are available in most subject areas in Grades 10-12.
2. A Junior High remedial program in mathematics, language arts, social studies or science is offered to students in Grades 7-9.
3. The English-as-an-Additional Language program provides Division students with the opportunity to enhance their basic English skills.

## SUSTAINABLE DEVELOPMENT

The Winnipeg School Division formalized its commitment to sustainable development in the 2007-08 school year with the Board of Trustees adopting a Five-Year Sustainable Development Plan, which will be reviewed and updated each year.

The Sustainable Development Plan has as its primary objective the development and implementation of Education for Sustainable Development (ESD) based programs initiated by teachers as well as those initiated by students. The plan also includes practices and other environmental measures for the operation of the Division that would serve to model what is taught in classrooms.

ESD programs not only benefit the students, but also support the environmental efforts already undertaken by the Division. By focusing

on student learning, there will be an increased appreciation of community, provincial and global issues related to the environment.

## WI WABIGOONI

Wi Wabigooni is an off campus program of Victoria-Albert School. The objective of the program is to provide an alternative off-site classroom to meet the educational needs of Aboriginal students in Grades 3-6.

The program focuses on academics with an emphasis on language arts and math. The students work individually and in small groups with consistent, available adult support and intervention. There is a cultural and activity base to the program which enhances belonging and confidence.

Wi Wabigooni receives referrals for students who are academically able and who have often had a history of absenteeism or many school moves and thus may be alienated from the large school institution. Referrals are received from schools, parents and community groups.

# Board Committees

---

There are four standing committees of the Board which meet on a regular basis to discuss matters under their respective jurisdictions and make recommendations to the Board. Special committees are established from time to time by motion of the Board to review and make recommendations to the Board on a specific topic.

The Chairperson is an ex-officio member of all committees of the Board.

## **POLICY/PROGRAM**

The Policy/Program Committee consists of the chair of the Finance/Personnel Committee, the Chair of the Building/Transportation Committee, Chair of the Public Relations/Communications Committee and one trustee at large who chairs the Policy/Program Committee.

The Committee reviews policy recommendations and deals with matters directly related to the quality and type of education provided at the elementary, secondary and community levels including all aspects of program planning, both curricular and extracurricular. The committee also deals with matters affecting services provided to students, and performs consultative duties relative to communication with students, parents, teachers and administrators on educational matters.

## **FINANCE/PERSONNEL**

The Finance/Personnel Committee consists of three members of the Board. The Committee considers and makes recommendations respecting budget guidelines; monitors the budget; acts as an audit and financial advisory committee;

and deals with personnel matters of a non-routine nature and personnel policies. A representative of the Finance/Personnel Committee sits on each of the management committees for negotiations with employee groups.

## **BUILDING/TRANSPORTATION**

The Building/Transportation Committee, which consists of three members of the Board, deals with: long range planning; building and site requirements; the promotion and coordination of community use of schools; school design, construction, and alteration; maintenance of buildings and grounds; the naming and opening of schools and matters related to transportation of students.

## **PUBLIC RELATIONS/COMMUNICATIONS**

The Public Relations/Communications Committee, which consists of three members of the Board, reviews and recommends policies outlining the Division's public relations and communications processes.

## **ADVISORY COMMITTEES**

The Board has several Advisory Committees comprised of parent council representatives which have been established to provide a line of communication between the Board of Trustees, School Parent Councils and the community, and to provide feedback to the Board in the review and development of Board policies and/or position papers.

# Budget

---

The Budget process is essentially a continuous process with planning for the subsequent year's Budget beginning as soon as the current year's Budget has been set.

The Budget for the Division is prepared in accordance with the Public Schools Act and follows the format established by Manitoba Education under the FRAME guidelines (Financial Reporting and Accounting in Manitoba Education).

The fiscal year for all school divisions in Manitoba is from July 1 to June 30.

The Finance/Personnel Committee makes recommendations to the Board of Trustees related to guidelines for preparation of the first draft budget by the administration. For the past number of years, it has been the practice of the Finance/Personnel Committee to request that the first Draft Budget be prepared on the basis of continuing all programs and services that are currently in place.

Once the Budget guideline has been approved by the Board, the central administration, schools and individual departments determine priorities and develop a budget for their school/department based on their anticipated needs for supplies, equipment, and materials.

In accordance with the Division's philosophy on school-based decision-making, school principals receive advice from their school-based decision-making committees or parent councils in determining budget priorities for their school.

Overall staff allocations for schools are determined by the superintendents in accordance with a formula which is applied consistently throughout the Division, with additional resources for schools where the student population demonstrates a high level of need. Principals are able to make decisions regarding how the staff allocations will be assigned within their schools.

The Chief Superintendent is responsible for reviewing all budget requests received from the senior administrative staff, and for recommend-

ing a proposed budget to the Finance/Personnel Committee, in the form of a first Draft Budget document.

In mid-January, the Province of Manitoba announces the amount of funding that will be provided for education in the Province, and advises each school division of the amount they can expect to receive in provincial grants. Approximately 55% of the Winnipeg Division's revenue, excluding the provincial tax credit, is provided from the province; approximately 43% is provided through property taxes from Division residents.

The revenue estimates are incorporated in the First Draft Budget and the document is made available to the public.

A public meeting is held to provide an overview of the budget and the Division's financial position.

The trustees then review the budget and determine final budget estimates taking into consideration feedback received from the public, the needs of the Division as a whole and a property tax rate that can be supported by the public.

In accordance with the Public Schools Act, the Board must submit its special levy tax requirements to the City of Winnipeg by March 15 which means that the total amount of estimated expenditures for the budget year, must be determined by this date.

As soon as the budget is finalized, the administration works with schools and departments to implement the changes for the coming school year.

The Board of Trustees and the administration continue to monitor the Division's programs and services, and budget expenditures on an ongoing basis. Input from schools, parents, and residents on areas having budget implications may be provided to the Board at any time throughout the year, not only during budget deliberations.

# Statistics

## SCHOOLS (as of September 30, 2008)

Elementary (N-6)	45
Elementary and Junior High (N-8)	10
Elementary and Junior High (N-9)	3
Junior High (7 & 8)	1
Junior High (7-9)	4
Junior and Senior High (7-12)	6
Senior High (9-12)	6
Senior High (10-12)	1
Winnipeg Adult Education Centre	1
<b>Total</b>	<b>77</b>

Number of districts within the Division 4

Number of schools in each district

• Inner City	21
• Central	19
• North	18
• South	19

## ENROLMENT

Total number of students	32,698
• elementary	21,326
• secondary	11,372

Students in language programs

• French immersion & milieu	3,353
• Hebrew Bilingual	174
• Ukrainian Bilingual	72
• Other heritage languages	967

Students in English-as-an-additional language program

5,182

Number of students in each district

• Inner City	6,691
• Central	9,412
• North	9,302
• South	7,293

## STAFF

• Academic	3,004
• Business and Support	2,435
<b>Total</b>	<b>5,439</b>

All figures unless otherwise indicated are as of October, 2008.

## SCHOOL YEAR 2009-10

<b>Sept. 7</b>	Labour Day (schools closed)
<b>Sept. 8</b>	Schools open for Fall Term
<b>Oct. 12</b>	Thanksgiving Day (schools closed)
<b>Dec. 18</b>	Last day of school before Winter Break
<b>Jan. 4</b>	Schools reopen for Spring Term
<b>Feb. 15</b>	Louis Riel Day (schools closed)
<b>March 26</b>	Last day of school before Spring Break
<b>April 2</b>	Good Friday
<b>April 5</b>	Schools reopen
<b>May 24</b>	Victoria Day (schools closed)
<b>June 30</b>	Last day of school before Summer Break

# School Index

(I) Inner City

(C) Central

(N) North

(S) South

	Cross streets	District	Grades	Page
Andrew Mynarski V.C.	Machray & McPhillips	(N)	7-9	8
Argyle Alternative	Argyle & Heaton	(I)	10-12	9
Brock Corydon	Brock & Corydon	(S)	N-6	9
Carpathia	Carpathia & Lockwood	(S)	N-6	10
Cecil Rhodes	William, Elgin & Cecil	(C)	N-9	10
Champlain	Machray, west of Charles	(N)	N-6	11
Children of the Earth	Salter & Stella	(I)	9-12	11
Churchill	Arnold & Hay	(S)	7-12	12
Clifton	Sargent & Clifton	(C)	N-6	12
Collège Churchill	Arnold & Hay	(S)	7-12	13
Daniel McIntyre	Alverstone & Wellington	(C)	9-12	13
David Livingstone	Stella, Flora & Schultz	(I)	N-8	14
Dufferin	Logan, foot of Slaw Rebchuk Bridge	(I)	N-6	14
Earl Grey	Cockburn, Garwood & Fleet	(S)	N-8	15
Elmwood	Chalmers & Raleigh	(C)	7-12	15
Faraday	Mountain & Parr	(N)	N-6	16
Fort Rouge	River & Mayfair (west of Main)	(I)	N-6	16
Garden Grove	Burrows, west of King Edward	(N)	N-6	17
General Wolfe	Ellice & Burnell	(I)	7-9	17
George V	Grey, Union & Chalmers	(C)	N-6	18
Gladstone	Gertrude, west of Osborne	(S)	N-6	18
Glenelm	Carman, west of Henderson	(C)	N-6	19
Gordon Bell	Maryland & Broadway	(I)	7-12	19
Grant Park	Nathaniel & Grant	(S)	7-12	20
Greenway	St. Matthews & Burnell	(C)	N-6	20
Grosvenor	Grosvenor & Wilton	(S)	N-6	21
Harrow	Harrow & Jackson	(S)	N-6	21
Hugh John Macdonald	Kate & William	(I)	7-9	22
Inkster	Inkster & Parr	(N)	N-6	22
Isaac Brock	Spruce, north of Portage	(C)	N-9	23
Isaac Newton	Parr & Aberdeen	(N)	7-9	23
J.B. Mitchell	John Brebeuf & Lanark	(S)	N-6	24
John M. King	Agnes & Ellice	(I)	N-6	24
Kelvin	Kingsway & Stafford	(S)	9-12	25
Kent Road	Kent & Manhattan	(C)	N-6	25
King Edward	Selkirk & Arlington	(I)	N-6	26
Lansdowne	Lansdowne & Wiginton	(N)	N-8	26
Laura Secord	Wolseley & Ruby	(C)	N-6	27
LaVérendrye	Jessie & Lilac	(S)	N-6	27

# School Index School Index School Index

---

Lord Nelson	McPhillips & Redwood	(N)	N-6	28
Lord Roberts	Beresford & Daly	(S)	N-6	28
Lord Selkirk	Brazier & Poplar	(C)	N-6	29
Luxton	Polson, west of Scotia	(N)	N-6	29
Machray	Mountain & Charles	(I)	N-6	30
Meadows West	Inkster & Garden Drive	(N)	N-8	30
Montrose	Montrose & Grant	(S)	N-6	31
Mulvey	Maryland & Wolseley	(I)	N-6	31
Niji Mahkwa	Flora & Stella	(I)	N-8	32
Norquay	Euclid, east of Main	(I)	N-6	32
Pinkham	Pacific, east of Arlington	(I)	N-6	33
Prairie Rose	Lucas, west of Burrows	(N)	N-6	33
Principal Sparling	Sherburn, south of Notre Dame	(C)	N-6	34
Queenston	Queenston & Kingsway	(S)	N-6	34
Ralph Brown	Machray & McGregor	(N)	N-8	35
	English/Ukrainian Program	(N)	K-8	35
R.B. Russell	Dufferin, east of Slaw Rebchuk Bridge	(I)	9-12	36
River Elm	Riverton, east of Watt	(C)	N-6	37
River Heights	Oak & Grosvenor	(S)	7-8	37
Riverview	Maplewood and Casey	(S)	N-6	38
Robert H. Smith	Oak & Kingsway	(S)	N-6	38
Robertson	Robertson & Cathedral	(N)	N-6	39
Rockwood	Rockwood & Fleet	(S)	N-6	39
Sacré-Coeur	Sherbrook, north of Notre Dame	(C)	N-8	40
St. John's	Church at Salter	(N)	7-12	40
Sargent Park	Sargent & Dominion	(C)	N-9	41
Shaughnessy Park	Manitoba & Chudley	(N)	N-8	41
Sisler	Redwood & Shaughnessy	(N)	9-12	42
Sister MacNamara	Sargent & Balmoral	(I)	N-6	42
Stanley Knowles	King Edward & Inkster	(N)	N-8	43
Strathcona	McKenzie & Burrows	(I)	N-6	43
Tec Voc	Notre Dame & Wall	(C)	9-12	44
Tyndall Park	King Edward & Burrows	(N)	N-6	44
Victoria-Albert	Ellen & Bannatyne/William	(I)	N-6	45
Wellington	Wellington & Beverley	(I)	N-6	45
Weston	Logan & Quelch	(C)	N-6	46
William Whyte	Manitoba & Powers	(I)	N-8	46
Winnipeg Adult Ed.	Vaughan, north of Portage	(C)	9-12	47
Wolseley	Clifton & Wolseley	(C)	N-6	48

# Quick Reference

---

## **Adult EAL**

- 700 Elgin Ave.
- 686 Portage Ave., 2nd floor
- 1021 + 1025 McPhillips St.
- 505 Chalmers Ave., Elmwood High

## **Adult Learning Centres**

### **Winnipeg Adult Education Centre Off-Campus**

- River Osborne Community Centre,  
101 Pembina Hwy., (477-0164)
- Kaakiyow li moond likol  
510 King Street, (582-9579)

## **Advanced Placement**

- Collège Churchill • Daniel McIntyre
- Elmwood • Gordon Bell • Grant Park • Sisler
- St. John's • Tec Voc

## **All Girls Classes**

Children of the Earth • Earl Grey • Sisler

## **Alternative Education**

### *Elementary*

Earl Grey • Isaac Brock • Laura Secord • Lord Selkirk • Luxton • Rockwood • Wolseley

### *Junior High*

Churchill • Elmwood • Gordon Bell

- Grant Park

### *Secondary*

Argyle Alternative • Churchill • Daniel McIntyre • General Wolfe • Gordon Bell

- Hugh John Macdonald • Isaac Newton
- St. John's

## **Coach Program (786-3469)**

Mulvey School

## **CHOICES Youth Program (788-0203)**

Prince Charles ERC

## **Community Transition (582-9318)**

Isaac Newton

## **Dental Clinic**

Machray (940-2090)

## **Diagnostic Learning Centre**

Ashland • Hugh John Macdonald • Lord Selkirk

- Wellington

## **Early School Years**

- Fort Rouge • Mulvey • Niji Mahkwa
- Pinkham • William Whyte • Wellington

## **English/Hebrew**

Brock Corydon (K-6)

## **English/Ukrainian**

Ralph Brown (K-8)

## **French**

### *Dual-Track*

Garden Grove • George V • J.B. Mitchell

- Kelvin • Laura Secord • River Heights
- Riverview • Robert H. Smith • Sisler
- Stanley Knowles

### *Milieu*

Collège Churchill • Lansdowne • LaVérendrye

- Sacré-Coeur

## **Infant Development Labs**

Adolescent Parent Centre • Argyle • Children of the Earth • Elmwood • Gordon Bell • Tec Voc

## **Interdivisional Student Services (788-0203)**

Prince Charles ERC

## **International Baccalaureate**

Kelvin

## **Learning through the Arts**

Inner City

## **Macdonald Youth Services**

Grant Park

## **Montcalm (477-6391)**

(Man. Adolescent Treatment Centre)  
120 Tecumseh Street

# Quick Reference Quick Reference Quick

---

## *Off Campus Sites*

### **Cecil Rhodes**

Unit 1-1000 Notre Dame Ave. (772-3356)

### **South District Senior High Off Campus**

Sir William Osler, 1600 Grant Ave. (488-1853)

### **Elmwood**

325 Talbot Ave. (3rd floor) (667-2325)

### **Gordon Bell - Junior High**

Unit A & B — 340 Ellice Ave. (772-1837)

### **Gordon Bell - Senior High**

335 Hargrave Street (942-3107)

### **Gordon Bell**

**Rising Sun** (942-0694)

(at Elgin House) 429 Elgin Ave.

### **Hugh John Macdonald**

**Eagle's Circle** (786-3974)

(at Rossbrook House) 658 Ross Avenue

### **Isaac Newton**

1039A McPhillips Street (582-2659)

### **Niji Mahkwa**

**Songide'ewin** (582-4577)

482/484 Selkirk Avenue

### **R.B. Russell**

**Ndinawe** (589-5545)

472 Selkirk Avenue

### **Tec Voc**

2nd Floor-346 Donald St. (775-9081)

### **Victoria-Albert**

**Wi Wabigooni** (957-7988)

346-348 Cumberland Ave.

## **Reading Recovery Program**

Sir William Osler (489-4689)

## **Semestered Schools**

Children of the Earth • Daniel McIntyre •  
Elmwood • Gordon Bell • Grant Park • Kelvin •  
Sisler • St. John's • Winnipeg Adult Ed.

## **Non-Semestered Schools**

Churchill • Collège Churchill • R.B. Russell •  
Tec Voc

## **Trimester School**

Argyle

## **S.T.A.R.S. Program**

Lord Roberts

## **Summer Session Main Office**

Ashland School (586-5015)

## **Volunteers Main Office**

Ashland (453-1748)

---

# 2009-10 School Calendar

<b>February 2010</b>	Sunday	Monday	Tuesday	Wednesday	Thursday	Friday	Saturday
		1 Day 3	2 Day 4	3 Day 5	4 Day 6	5 Day 1	6
	7	8 Day 2	9 Day 3	10 Day 4	11 Day 5	12 Day 6	13
	14	15 <small>Louis Riel Day</small>	16 Day 1	17 Day 2	18 Day 3	19 Day 4	20
	21	22 Day 5	23 Day 6	24 Day 1	25 Day 2	26 Day 3	27
	28						

<b>March 2010</b>	Sunday	Monday	Tuesday	Wednesday	Thursday	Friday	Saturday
		1 Day 4	2 Day 5	3 Day 6	4 Day 1	5 Day 2	6
	7	8 Day 3	9 Day 4	10 Day 5	11 Day 6	12 Day 1	13
	14	15 Day 2	16 Day 3	17 Day 4	18 Day 5	19 Day 6	20
	21	22 Day 1	23 Day 2	24 Day 3	25 Day 4	26 Day 5 <small>Last day of school</small>	27
	28	29 <small>Spring Break starts</small>	30	31			

<b>April 2010</b>	Sunday	Monday	Tuesday	Wednesday	Thursday	Friday	Saturday
					1	2 <small>Good Friday Spring Break ends</small>	3
	4	5 Day 6 <small>Schools reopen</small>	6 Day 1	7 Day 2	8 Day 3	9 Day 4	10
	11	12 Day 5	13 Day 6	14 Day 1	15 Day 2	16 Day 3	17
	18	19 Day 4	20 Day 5	21 Day 6	22 Day 1	23 Day 2	24
	25	26 Day 3	27 Day 4	28 Day 5	29 Day 6	30 Day 1	

<b>May 2010</b>	Sunday	Monday	Tuesday	Wednesday	Thursday	Friday	Saturday
							1
	2	3 Day 2	4 Day 3	5 Day 4	6 Day 5	7 Day 6	8
	9	10 Day 1	11 Day 2	12 Day 3	13 Day 4	14 Day 5	15
	16	17 Day 6	18 Day 1	19 Day 2	20 Day 3	21 Day 4	22
	23/30	24/31 /Day 3 <small>24 - Victoria Day</small>	25 Day 5	26 Day 6	27 Day 1	28 Day 2	29

<b>June 2010</b>	Sunday	Monday	Tuesday	Wednesday	Thursday	Friday	Saturday
			1 Day 4	2 Day 5	3 Day 6	4 Day 1	5
	6	7 Day 2	8 Day 3	9 Day 4	10 Day 5	11 Day 6	12
	13	14 Day 1	15 Day 2	16 Day 3	17 Day 4	18 Day 5	19
	20	21 Day 6	22 Day 1	23 Day 2	24 Day 3	25 Day 4	26
	27	28 Day 5	29 Day 6	30 Day 1 <small>Last day of school</small>			

